



Branche Connecteurs Aéromilitaires



983 series Norme EN 2997

- Norme SBAC-ESC10
- Spécification BACC63

| | | | |
|-----------------------------|-------|--|-------|
| Présentation | 2-3 | <i>Introduction</i> | 2-3 |
| Synoptique | 4 | <i>Synoptic</i> | 4 |
| Caractéristiques techniques | 5-6 | <i>Technical characteristics</i> | 5-6 |
| Système de référence | 7 | <i>Part-numbering system</i> | 7 |
| Détrompage mécanique | 8 | <i>Keying positions</i> | 8 |
| Arrangements | 9 | <i>Arrangements</i> | 9 |
| Embases étanches / Fiches | 10-11 | <i>Sealing receptacles / Plugs</i> | 10-11 |
| Embases hermétiques | 12-13 | <i>Hermetic receptacles</i> | 12-13 |
| Accouplements | 14 | <i>Mating and unmating dimensions</i> | 14 |
| Accessoires | 15 | <i>Accessories</i> | 15 |
| Capuchons / Joint plats | 16-17 | <i>Protective covers / Panel seals</i> | 16-17 |
| Contacts et outillages | 18-19 | <i>Contacts and tools</i> | 18-19 |

Connecteur électrique conçu pour utilisation :

- Sur les moteurs et propulseurs
- Dans les zones à environnement sévères.

Connecteur électrique à verrouillage à vis par bague filetée, auto-freinée, à sens prépondérant au verrouillage. (Tous modèles).

Cette série de connecteurs est issue des normes EN 2997, MIL-C 83723 Série III, NF L 54143 et des normes MIL-C 39029 , EN3155 et ESC30 pour les contacts électriques, et répond aux spécifications SBAC ESC10 et Boeing BACC63.

Les améliorations suivantes ont été apportées par rapport à la norme MIL-C-83723 :

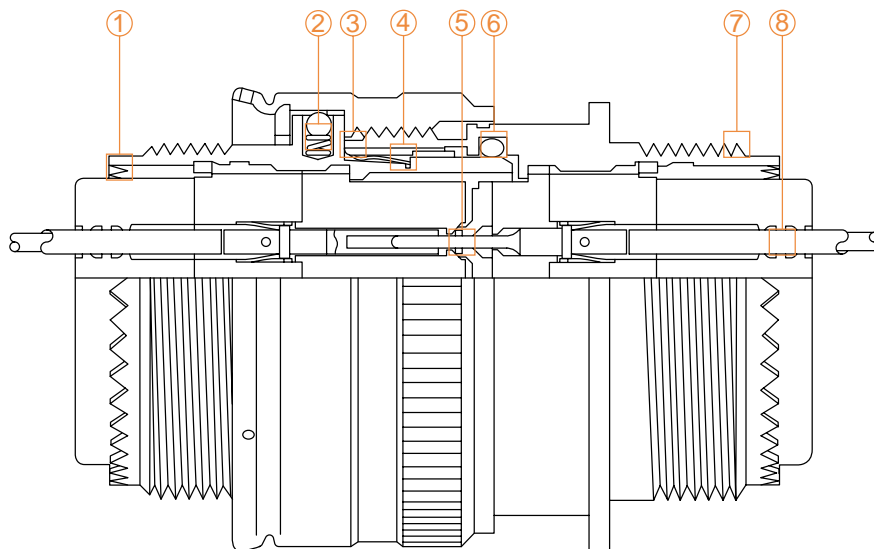
- Butée mécanique à l'accouplement.
- Denture sur 360° à l'arrière de tous les boîtiers.
- Système auto-freinant à prépondérance sur toutes les fiches.
- Réduction des barrières d'étanchéité pour utilisation des câbles d'ancienne et de nouvelle générations.

Tous les connecteurs DEUTSCH de la Série 983 sont interchangeables et intermariables avec les connecteurs des normes MIL-C 83723 série III, NFL 54143 et avec les connecteurs DEUTSCH Série 83730.

Une gamme d'accessoires, complète la famille de connecteurs 983 :

- écrou arrière
- serre câble droit
- serre câble coudé
- raccord potting etc...

Consultez-nous pour de plus amples renseignements.



- 1 - Système anti-rotation par denture sur 360° assurant un serrage et un blocage efficaces des accessoires.
- 2 - Système d'auto-freinage à sens préférentiel
- 3 - Blocage mécanique en fin de verrouillage
- 4 - Continuité électrique entre fiche et embase par couronne de masse (RFI)
- 5 - Étanchéité individuelle des contacts par compression des cheminées en élastomère sur isolant dur
- 6 - Étanchéité entre fiche et embase par joint périphérique
- 7 - Étanchéité entre boîtier et isolant par opération de potting silicone
- 8 - Étanchéité garantie sur chaque câble grâce à plusieurs barrières d'étanchéité.

Electrical connectors using for :

- Engines and booster
- Severe aera

Electrical connector threaded coupling with self locking (all connectors).

Those connector series are in accordance with the standards EN2997, MIL-C 83723 Series III, NF-L 54143 and MIL-C 39029, EN3155 and ESC30 for electrical contacts. As per specifications SBAC ESC10 and Boeing BACC63.

The following improvements have been brought to the standard MIL-C-83723 :

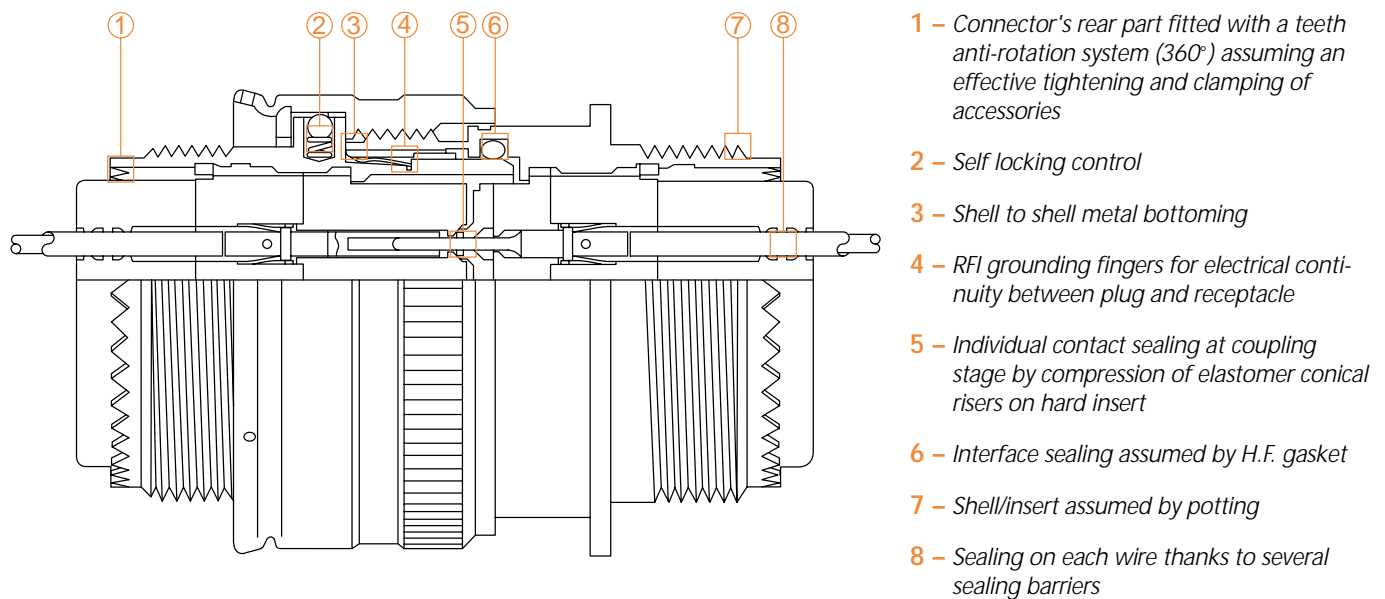
- Shell to shell metal bottoming (Plug and receptacle mated).
- Anti rotation system on 360° by tightening.
- Self locking system all plug.
- Reduced elastomer barriers to use new and old generations of wires.

All electrical connectors Deutsch 983 series are intermatable and interchangeable with connectors in accordance with MIL-C 83723 series III, NF-L 54143 and the Deutsch connectors 83730 series.

A accessories range completes the 983 connector series :

- Backnut.
- Straight cable clamp.
- Elbowed cable clamp
- Potting cup.

For any informations please consult us.



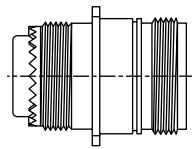
- 1 – Connector's rear part fitted with a teeth anti-rotation system (360°) assuming an effective tightening and clamping of accessories
- 2 – Self locking control
- 3 – Shell to shell metal bottoming
- 4 – RFI grounding fingers for electrical continuity between plug and receptacle
- 5 – Individual contact sealing at coupling stage by compression of elastomer conical risers on hard insert
- 6 – Interface sealing assumed by H.F. gasket
- 7 – Shell/insert assumed by potting
- 8 – Sealing on each wire thanks to several sealing barriers

Accessoires
Accessories

Embases
Receptacles

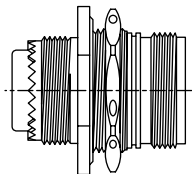
Embase étanche collerette carrée /
Square flange receptacle sealed

TYPE 0



Embase étanche collerette ronde /
Round flange receptacle sealed

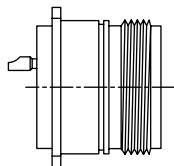
TYPE 7



Embases hermétiques
Hermetical receptacle

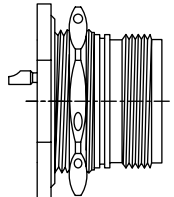
Embase hermétique collerette carrée /
Hermetic square flange receptacle

TYPE 0



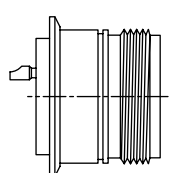
Embase hermétique collerette ronde /
Hermetic round flange receptacle

TYPE 7



Embase hermétique à souder /
Hermetic solder receptacle

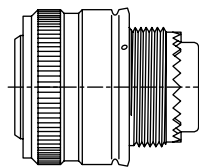
TYPE 1



Fiches
Plugs

Fiche étanche /
Sealed plug

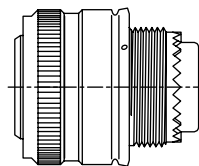
TYPE 6



W, R, K, KE

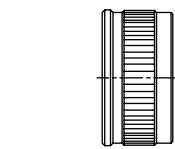
Fiche étanche avec continuité
de mass RFI /
Sealed plug with RFI fingers

TYPE 6

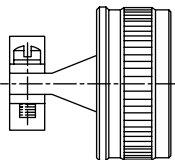


WS, RS, S, SE

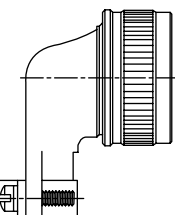
Accessoires
Accessories



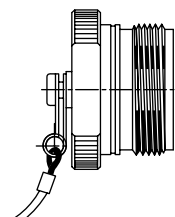
Écrou arrière /
Nut



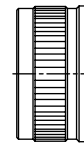
Serre câble droit /
Straight cable clamp



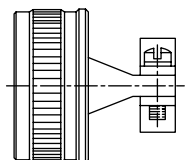
Serre câble coudé /
Elbowed cable clamp



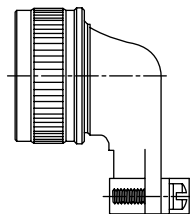
Capuchon de protection /
Protective cap



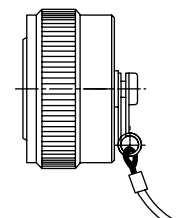
Écrou arrière /
Nut



Serre câble droit /
Straight cable clamp



Serre câble coudé /
Elbowed cable clamp



Capuchon de protection /
Protective cap

POSSIBILITÉS D'ASSOCIATIONS DES FICHES ET EMBASES
PLUGS AND RECEPTACLES MATING POSSIBILITIES

| | | | | |
|---|-------------|-------------|--------------------------------------|--------------------------------------|
| Classe de température <i>Temperature class</i> | 175°C | 200°C | 200° C | 260° C Cyclique <i>Cyclic</i> |
| Matière boîtiers <i>Shells material</i> | Aluminium | Aluminium | Acier inox <i>Stainless steel</i> | Acier inox <i>Stainless steel</i> |
| Fiches <i>Plugs</i> | W ou/ or WS | R ou/ or RS | K ou/ or S | SE ou/ or KE |
| Embases <i>Receptacles</i> | WS | RS | S ou/ or Y | SE ou/ or YE |

Mécaniques

| | | | Modèles de connecteurs | | | | | | | | | |
|--|-------------------|----------------------------------|------------------------|----|---|---|----|---|---|----|----|----|
| | | | W | WS | K | R | RS | S | Y | KE | SE | YE |
| Boîtier | Matériau | : Acier inoxydable | | | • | | | • | • | • | • | • |
| | | : Aluminium nickelé | | | | • | • | | | | | |
| | | : Aluminium cadmié vert olive | • | • | | | | | | | | |
| solant | Matériau | : Résine thermodurcissable | • | • | • | • | • | • | | • | • | |
| | | : Silicone | • | • | • | • | • | • | • | • | • | • |
| | | : Verre fritté | | | | | | | | • | | • |
| Contacts | Type | : À sertir, doré, démontable | • | • | • | • | • | • | | • | • | |
| | | : À souder, doré, non démontable | | | | | | | | • | | • |
| Version | : Étanche | | • | • | • | • | • | • | | • | • | |
| | : Hermétique | | | | | | | | | • | | • |
| Température d'utilisation | : 175° C | | • | • | | | | | | | | |
| | : 200° C | | | | • | • | • | • | • | | | |
| | : 260° C cyclique | | | | | | | | | | • | • |
| Tenue au feu suivant EN2591-318 | | | | | • | | | • | | • | • | |
| Verrouillage à sens préférentiel | | | • | • | • | • | • | • | | • | • | |
| Endurance mécanique | : 250 manoeuvres | | • | • | | • | • | | | | | |
| | : 500 manoeuvres | | | | • | | | • | • | • | • | • |
| Continuité de masse | | | | • | | | • | • | | | • | |
| Tenue aux brouillard salin suivant EN 2591-307 | : 48 heures | | | | | | | | • | | | • |
| | : 96 heures | | | | | • | • | | | | | |
| | : 500 heures | | • | • | • | | | • | | • | • | |
| Vibrations suivant EN 2591 essai D3, méthodes B (de 10 à 2000 Hz dans les 3 axes) | | | • | • | • | • | • | • | • | • | • | • |
| Chocs suivant EN2591-402 | | | • | • | • | • | • | • | • | • | • | • |

Électriques

| | | |
|---|---|---|
| Résistance d'isolement | : > à 5000 MΩ à 25° C et 65% HR | |
| Tension de tenue | Au niveau de la mer | : 1500 V eff. 50 Hz connecteurs accouplés |
| | A 15000 mètres d'altitude | : 1000 V eff. 50 Hz connecteurs accouplés |
| | A 30000 mètres d'altitude | : 200 V eff. 50 Hz connecteurs désaccouplés |
| Efficacité du blindage suivant EN 2591-213 | : 100 MHz à 1 GHz pour modèles RS - S - SE - WS | |
| Intensité nominale admissible : (en fonction des câbles utilisés, voir tableau ci-dessous) | | |

| Type de contact | Taille | | Tailles des conducteurs | | | | Diamètre extérieur sur gaines des câbles (en mm) | Intensité max. par contacts en (Amp.) | |
|-----------------|---------|-----|-------------------------|-----------|---|-------------|--|---------------------------------------|------------|
| | | | Câbles standards | | Câbles résistant au feu suivant EN 2234 | | | Étanche | Hermétique |
| | Contact | Fût | Code AECMA | Code AWG* | Code AECMA | Code AWG* | | | |
| Standard | 20 | 20 | 006 | 20 | - | - | 0,85 à 2,10 | 7,5 | 5 |
| | | | 004 | 22 | 004 | 22 | | 5 | - |
| | | | 002 | 24 | - | - | | 3 | - |
| | 16 | 16 | 012 | 16 | - | - | 1,20 à 2,70 | 13 | 10 |
| | | | 010 | 18 | 010 | 18 | | 11 | - |
| | | | 006 | 20 | 006 | 20 | | 7,5 | - |
| 12 | 12 | 030 | 12 | - | - | 1,90 à 4,00 | 23 | 17 | |
| | | 020 | 14 | 020 | 14 | | 17 | - | |
| Spécifique | 20 | 18 | 010 | 18 | - | - | 0,85 à 2,10 | 7,5 | - |
| | | | 006 | 20 | - | - | | 7,5 | - |
| | | | 004 | 22 | 004 | 22 | | 5 | - |
| | | | 002 | 24 | - | - | | 3 | - |

*AWG : "American Wire Gage" la plus proche

Mechanical

| | | | Models of connectors | | | | | | | | | |
|---|----------|---|----------------------|----|---|---|----|---|---|----|----|----|
| | | | W | WS | K | R | RS | S | Y | KE | SE | YE |
| Shell | Material | : Stainless steel | | | • | | | • | • | • | • | • |
| | | : Aluminium nickel | | | | • | • | | | | | |
| | | : Aluminium olive drab cadmium | • | • | | | | | | | | |
| Insert | Material | : Thermo-setting | • | • | • | • | • | • | | • | • | |
| | | : Silicone | • | • | • | • | • | • | • | • | • | • |
| | | : Sinleved glass | | | | | | | | • | | • |
| Contacts | Type | : Crimp type, removable, plating gold | • | • | • | • | • | • | | • | • | |
| | | : Solder type, no removable, plating gold | | | | | | | | • | | • |
| Version | | | • | • | • | • | • | • | | • | • | |
| | | | | | | | | | • | | • | |
| Temperature range | | | • | • | | | | | | | | |
| | | | | | • | • | • | • | • | | | |
| | | | | | | | | | | | • | • |
| Fire resistance as per EN2591-318 | | | | | • | | | • | | • | • | |
| Connector with self locking control | | | • | • | • | • | • | • | | • | • | |
| Mechanical endurance | | | • | • | | | | | | | | |
| | | | | | • | | | • | • | • | • | • |
| Shielding : RFI on plug | | | | • | | | • | • | | | • | • |
| Corrosion (salt spray) as per EN 2591-307 | | | | | | | | | • | | | • |
| | | | | | | • | • | | | | | |
| | | | • | • | • | | | • | | • | • | |
| Vibrations as per EN 2591 test D3, method B (of 10 at 2000 Hz in the 3 axes) | | | • | • | • | • | • | • | • | • | • | • |
| Shocks as per EN2591-402 | | | • | • | • | • | • | • | • | • | • | • |

Electrical

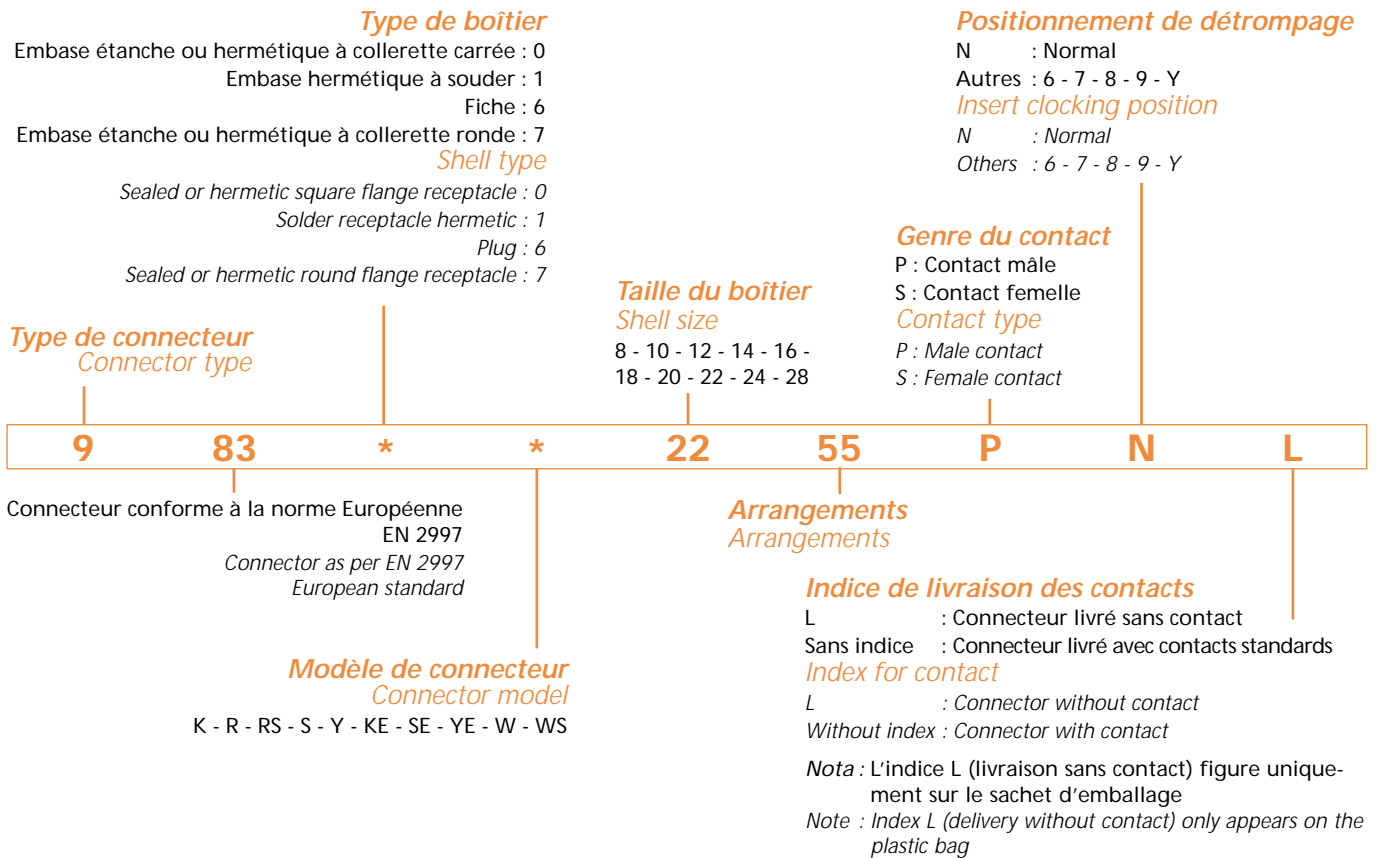
| | | | |
|---|-----------------------------|--|---|
| Insulation resistance | | | : > 5000 MΩ to 25° C and 65% R.H |
| Withstanding voltage | | | : 1500 VHz (RMS) mating connectors |
| | At sea level | | : 1000 VHz (RMS) mating connectors |
| | At 15000 meters in altitude | | : 200 VHz (RMS) unmating connectors |
| At 30000 meters in altitude | | | : 100 MHz to 1 GHz models RS - S - SE -WS |
| Shielding efficiency as per EN 2591-213 | | | : 100 MHz to 1 GHz models RS - S - SE -WS |
| Current nominal rating : (as per cables used see table below) | | | |

| Contact type | Size | | Conductors sizes | | | | Diameter over insulating sheath (in mm) | Maximum permissible current rating per contact (in Amp.) | |
|--------------|------|-----|------------------|--------|--------------------------------------|--------------|---|--|------------|
| | | | Standards cables | | Cables fire resistant as per EN 2234 | | | Connector | |
| | | | Contact | Bucket | Code AECMA | Code AWG * | | Code AECMA | Code AWG * |
| Standard | 20 | 20 | 006 | 20 | - | - | 0,85 to 2,10 | 7,5 | 5 |
| | | | 004 | 22 | 004 | 22 | | 5 | - |
| | | | 002 | 24 | - | - | | 3 | - |
| | 16 | 16 | 012 | 16 | - | - | 1,20 to 2,70 | 13 | 10 |
| | | | 010 | 18 | 010 | 18 | | 11 | - |
| | | | 006 | 20 | 006 | 20 | | 7,5 | - |
| 12 | 12 | 030 | 12 | - | - | 1,90 to 4,00 | 23 | 17 | |
| | | 020 | 14 | 020 | 14 | | 17 | - | |
| | | 010 | 18 | - | - | | 7,5 | - | |
| Specific | 20 | 18 | 006 | 20 | - | - | 0,85 to 2,10 | 7,5 | - |
| | | | 004 | 22 | 004 | 22 | | 5 | - |
| | | | 002 | 24 | - | - | | 3 | - |
| | | | | | | | | | |

*AWG : " American Wire Gage".

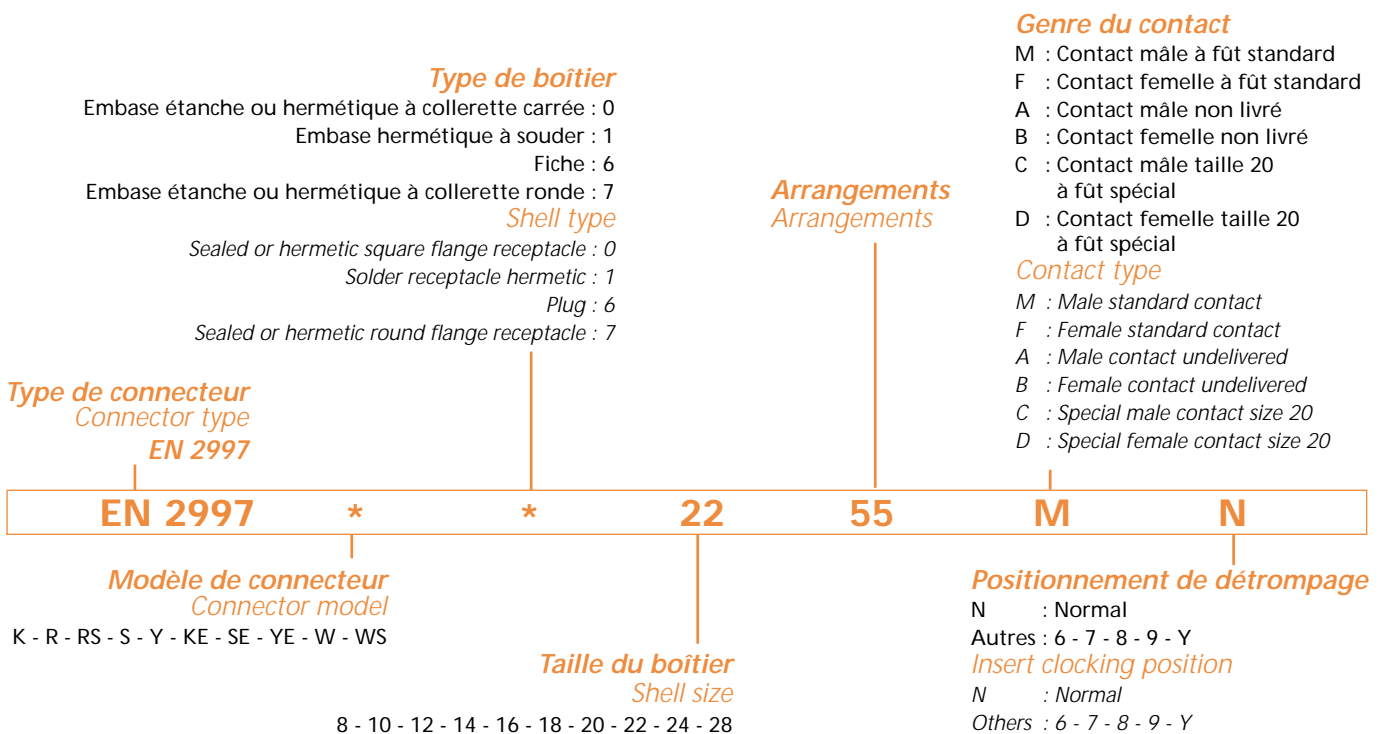
Système Deutsch / Deutsch part numbering system

Exemple de commande : 983-7K18-31SN

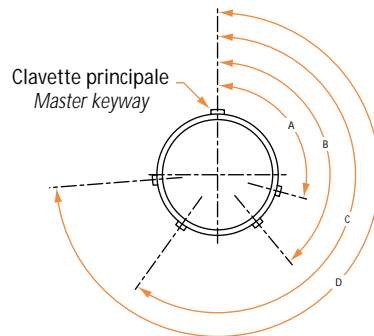


Système AECMA / AECMA part numbering system

Exemple de commande : EN2997K7-18-31FN



Fiche, vue face avant / Front view plug



| Position Keying | Taille/Size 8 | | | | Taille/Size 10 | | | | Taille/Size 12 à thru 28 | | | |
|--------------------|---------------|-----|-----|-----|----------------|-----|-----|-----|--------------------------|-----|-----|-----|
| | A° | B° | C° | D° | A° | B° | C° | D° | A° | B° | C° | D° |
| N-Normal | 105 | 140 | 215 | 265 | 105 | 140 | 215 | 265 | 105 | 140 | 215 | 265 |
| 6 | 102 | 132 | 248 | 320 | 102 | 132 | 248 | 320 | 18 | 149 | 192 | 259 |
| 7 | 80 | 118 | 230 | 312 | 80 | 118 | 230 | 312 | 92 | 152 | 222 | 342 |
| 8 | 35 | 140 | 205 | 275 | 35 | 140 | 205 | 275 | 84 | 152 | 204 | 334 |
| 9 | 64 | 155 | 234 | 304 | 64 | 155 | 234 | 304 | 24 | 135 | 199 | 240 |
| Y | | | | | 25 | 115 | 220 | 270 | 98 | 152 | 268 | 338 |

Arrangements / Arrangements

Vue face avant isolant mâle / Male insert view from front face



Disposition 08-03
3 contacts taille/size 20



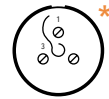
Disposition 08-98
3 contacts taille/size 20



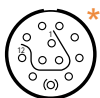
Disposition 10-05
5 contacts taille/size 20



Disposition 10-06
6 contacts taille/size 20



Disposition 12-03
3 contacts taille/size 16



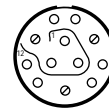
Disposition 12-12
12 contacts taille/size 20



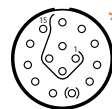
Disposition 14-04
4 contacts taille/size 12



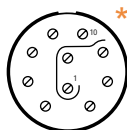
Disposition 14-07
7 contacts taille/size 16



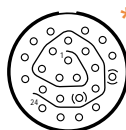
Disposition 14-12
9 contacts taille/size 20
3 contacts taille/size 16



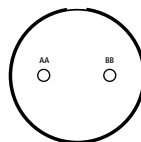
Disposition 14-15
15 contacts taille/size 20



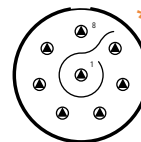
Disposition 16-10
10 contacts taille/size 16



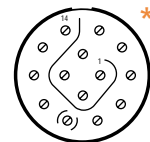
Disposition 16-24
24 contacts taille/size 20



Disposition 18-02
2 contacts Quadrax taille/size 8

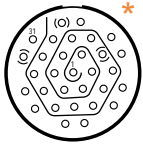


Disposition 18-08
8 contacts taille/size 12

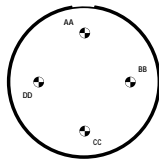


Disposition 18-14
14 contacts taille/size 16

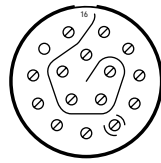
Vue face avant isolant mâle / Male insert view from front face



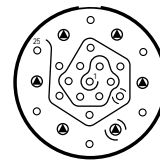
Disposition 18-31
31 contacts taille/size 20



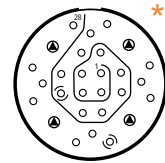
Disposition 20-04
4 contacts K6 pour câble cuivre/for copper cable taille/size 06



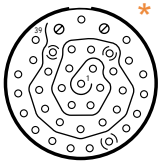
Disposition 20-16
16 contacts taille/size 16



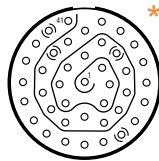
Disposition 20-25 (*)
19 contacts taille/size 20
6 contacts taille/size 12



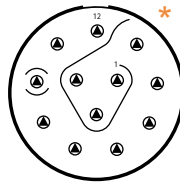
Disposition 20-28
24 contacts taille/size 20
4 contacts taille/size 12



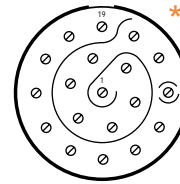
Disposition 20-39
37 contacts taille/size 20
2 contacts taille/size 16



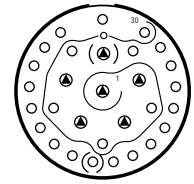
Disposition 20-41
41 contacts taille/size 20



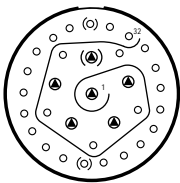
Disposition 22-12
12 contacts taille/size 12



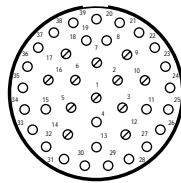
Disposition 22-19
19 contacts taille/size 16



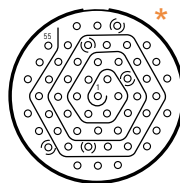
Disposition 22-30
24 contacts taille/size 20
6 contacts taille/size 12



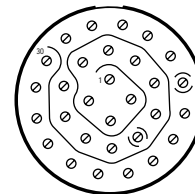
Disposition 22-32 (*)
26 contacts taille/size 20
6 contacts taille/size 12



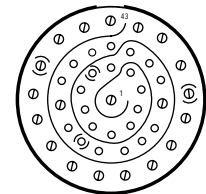
Disposition 22-39
27 contacts taille/size 20
12 contacts taille/size 16



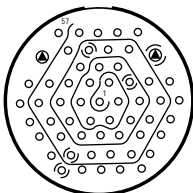
Disposition 22-55
55 contacts taille/size 20



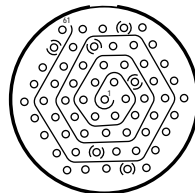
Disposition 24-30 (*)
30 contacts taille/size 16



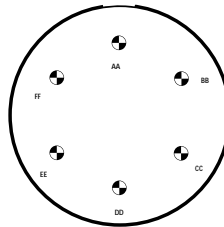
Disposition 24-43 (*)
23 contacts taille/size 20
20 contacts taille/size 16



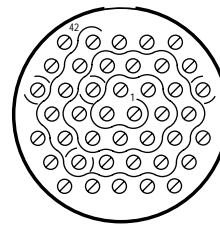
Disposition 24-57 (*)
55 contacts taille/size 20
2 contacts taille/size 12



Disposition 24-61 (*)
61 contacts taille/size 20



Disposition 28-06
6 contacts pour câble cuivre/for copper cable taille/size 06



Disposition 28-42
42 contacts taille/size 16

* : Disponible en hermétique / Available in hermetic version

(*) : Nous consulter / Consult us

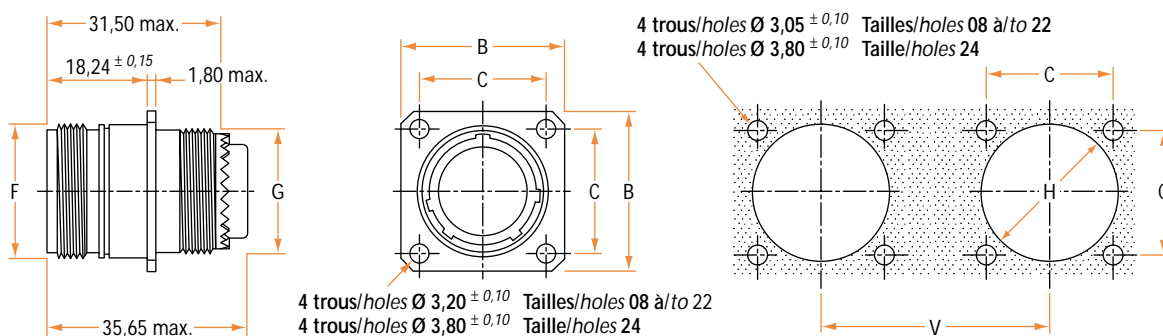
| Arrangements | Nombre de contacts | | | Arrangements | Nombre de contacts | | | Arrangements | Nombre de contacts | | |
|--------------|--------------------|----|----|--------------|--------------------|----|----|--------------|--------------------|----|----|
| | Taille/Size | | | | Taille/Size | | | | Taille/Size | | |
| Arrangements | 20 | 16 | 12 | Arrangements | 20 | 16 | 12 | Arrangements | 20 | 16 | 12 |
| 08-03 | 3 | - | - | 16-24 | 24 | - | - | 22-30 | 24 | - | 6 |
| 08-98 | 3 | - | - | 18-08 | - | - | 8 | 22-32 | 26 | - | 6 |
| 10-05 | 5 | - | - | 18-14 | - | 14 | - | 22-39 | 27 | 12 | - |
| 10-06 | 6 | - | - | 18-31 | 31 | - | - | 22-55 | 55 | - | - |
| 12-03 | - | 3 | - | 20-16 | - | 16 | - | 24-30 | - | 30 | - |
| 12-12 | 12 | - | - | 20-25 | 19 | - | 6 | 24-43 | 23 | 20 | - |
| 14-04 | - | - | 4 | 20-28 | 24 | - | 4 | 24-57 | 55 | - | 2 |
| 14-07 | - | 7 | - | 20-39 | 37 | 2 | - | 24-61 | 61 | - | - |
| 14-12 | 9 | 3 | - | 20-41 | 41 | - | - | 28-42 | - | 42 | - |
| 14-15 | 15 | - | - | 22-12 | - | - | 12 | | | | |
| 16-10 | - | 10 | - | 22-19 | - | 19 | - | | | | |

Collerette carrée / Square flange

• **Version étanche / Sealed version**

Mode de fixation 4 vis / Mounting styles with 4 screws

TYPE 0



Nota : Les joints plats sont à commander séparément
 Note : Panel seal must be ordered separately
 (voir page 13 / see page 13)

| Taille Size | B max. | C ± 0,05 | F max. | G max. | H +0 -0,02 | V mini. | Masse max. (gr) Weight max. (gr) | |
|----------------|-----------|-------------|-----------|-----------|------------------|------------|-------------------------------------|------|
| | | | | | | | Inox | Alu. |
| 08 | 20,75 | 15,09 | 14,27 | 12,70 | 15,80 | 31,70 | 19 | 11 |
| 10 | 23,93 | 18,26 | 17,47 | 15,88 | 18,70 | 34,90 | 28 | 16 |
| 12 | 26,32 | 20,62 | 22,22 | 19,05 | 23,40 | 39,60 | 39 | 27 |
| 14 | 28,71 | 23,01 | 23,82 | 22,23 | 24,90 | 41,25 | 51 | 30 |
| 16 | 31,88 | 24,61 | 26,97 | 25,40 | 28,30 | 44,45 | 62 | 34 |
| 18 | 34,24 | 26,97 | 30,18 | 26,97 | 31,10 | 47,35 | 73 | 36 |
| 20 | 36,63 | 29,36 | 33,32 | 30,18 | 34,50 | 51,90 | 82 | 40 |
| 22 | 39,80 | 31,75 | 36,53 | 33,32 | 37,50 | 54,10 | 90 | 51 |
| 24 | 43,39 | 34,92 | 39,67 | 36,53 | 40,60 | 57,25 | 105 | 58 |
| 28 | 50,93 | 39,67 | 46,02 | 44,45 | 48 | 65,25 | 126 | 88 |

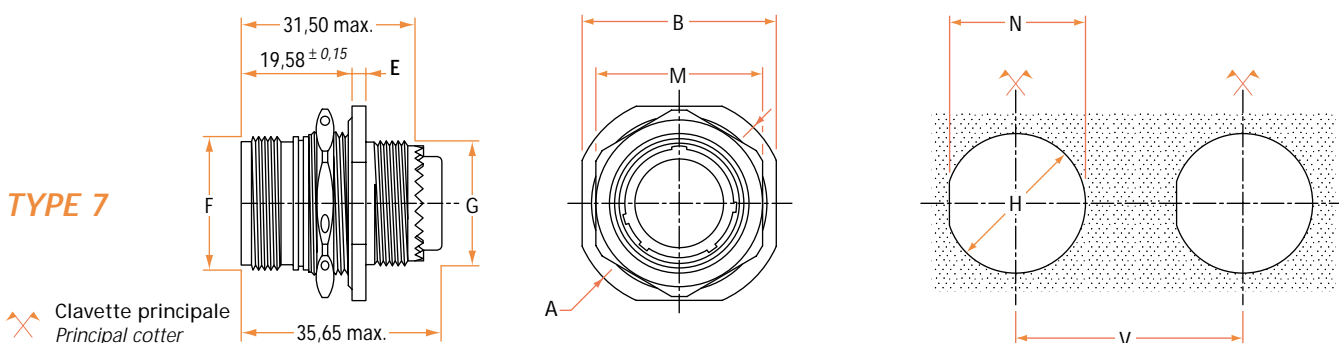
* : Sans contact / Without contact

Collerette ronde / Round flange

• **Version étanche / Sealed version**

Mode de fixation par écrou / Mounting styles with panel cutout

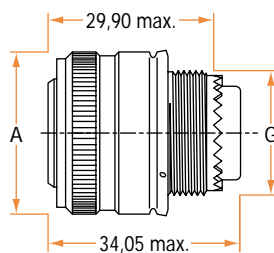
TYPE 7



| Taille Size | A max. | B max. | E max. | F max. | G max. | H +0 -0,2 | M max. | N +0 -0,2 | V mini. | Masse max. (gr) Weight max. (gr) | | Couple de serrage de l'écrou de panneau Tightening torque panel nut |
|----------------|-----------|-----------|-----------|-----------|-----------|-----------------|-----------|-----------------|------------|-------------------------------------|------|--|
| | | | | | | | | | | Inox | Alu. | |
| 08 | 27,38 | 24,89 | 3,48 | 14,27 | 12,70 | 16,26 | 21,06 | 15,50 | 31,70 | 32 | 15 | 7m.N max. |
| 10 | 30,28 | 28,04 | 3,48 | 17,47 | 15,88 | 19,43 | 24,23 | 18,67 | 34,90 | 41 | 21 | 10m.N max. |
| 12 | 35,05 | 32,79 | 3,48 | 22,22 | 19,05 | 24,18 | 29,01 | 23,42 | 39,60 | 58 | 30 | 12m.N max. |
| 14 | 38,51 | 35,33 | 3,48 | 23,82 | 22,23 | 25,78 | 30,61 | 25,02 | 41,25 | 68 | 35 | 15m.N max. |
| 16 | 41,68 | 38,51 | 3,48 | 26,97 | 25,40 | 28,96 | 33,75 | 28,20 | 44,45 | 82 | 46 | 18m.N max. |
| 18 | 44,86 | 41,68 | 3,48 | 30,18 | 26,97 | 32,13 | 36,96 | 31,25 | 47,35 | 88 | 51 | 22m.N max. |
| 20 | 49,63 | 44,86 | 3,48 | 33,32 | 30,18 | 35,31 | 40,11 | 34,42 | 51,90 | 100 | 56 | 25m.N max. |
| 22 | 52,78 | 49,63 | 3,76 | 36,53 | 33,32 | 38,48 | 43,31 | 37,59 | 54,10 | 123 | 69 | 27m.N max. |
| 24 | 55,42 | 52,81 | 3,76 | 39,67 | 36,53 | 41,65 | 46,46 | 40,77 | 57,25 | 137 | 82 | 29m.N max. |
| 28 | 61,82 | 59,21 | 3,76 | 46,02 | 44,45 | 48,01 | 54,41 | 47,14 | 65,25 | 191 | 120 | 30m.N max. |

* : Sans contact / Without contact

- Version étanche / Sealed version



| Taille Size | A max. | G max. | Masse max. (gr) * Weight max. (gr) | |
|----------------|-----------|-----------|---------------------------------------|------|
| | | | Inox | Alu. |
| 08 | 21,30 | 12,70 | 31 | 14 |
| 10 | 24,90 | 15,85 | 44 | 21 |
| 12 | 29,60 | 19,05 | 57 | 26 |
| 14 | 31,24 | 22,20 | 72 | 38 |
| 16 | 32,42 | 25,40 | 82 | 39 |
| 18 | 37,34 | 26,95 | 95 | 43 |
| 20 | 41,91 | 30,15 | 108 | 48 |
| 22 | 44,07 | 33,30 | 121 | 65 |
| 24 | 47,24 | 36,50 | 134 | 67 |
| 28 | 55,24 | 44,45 | 160 | 103 |

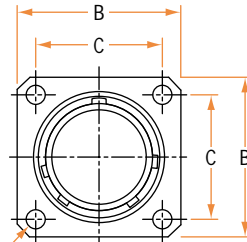
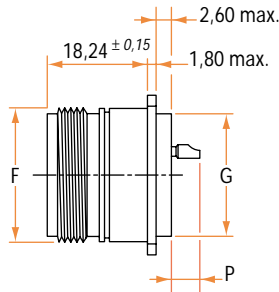
* : Sans contact / Without contact

Collerette carrée / Square flange

• **Version hermétique / Hermetic version**

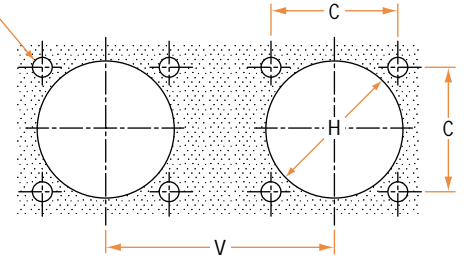
Mode de fixation 4 vis / Mounting styles with 4 screws

TYPE 0



4 trous/holes $\varnothing 3,20 \pm 0,10$ Tailles/sizes 08 à 22
4 trous/holes $\varnothing 3,80 \pm 0,10$ Taille/size 24

4 trous/holes $\varnothing 3,05 \pm 0,10$ Tailles/sizes 08 à 22
4 trous/holes $\varnothing 3,80 \pm 0,10$ Taille/size 24



Nota : Les joints plats sont à commander séparément
Note : Panel seal must be ordered separately
(voir page 13 / see page 13)

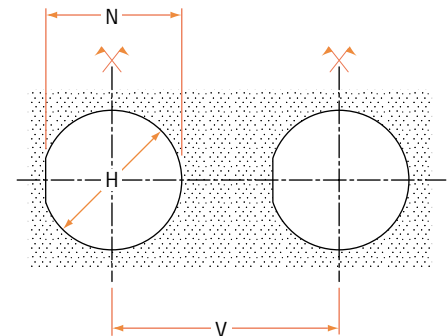
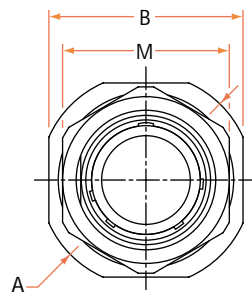
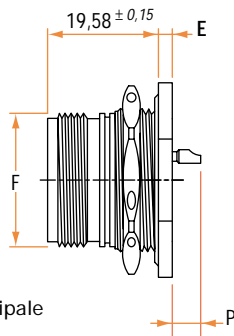
| Taille Size | B max. | C $\pm 0,05$ | F max. | G max. | H $+0$ $-0,2$ | P max. | | V | Masse max. (gr) Weight max. (gr) |
|----------------|-----------|-----------------|-----------|-----------|---------------------|-------------------|-------|-------|-------------------------------------|
| | | | | | | Taille/Size 20 | 16-12 | | |
| 08 | 20,75 | 15,09 | 14,27 | 12,70 | 15,80 | 4,93 | 5,69 | 31,70 | 18 |
| 10 | 23,93 | 18,26 | 17,47 | 14,27 | 18,70 | 4,93 | 5,69 | 34,90 | 24 |
| 12 | 26,32 | 20,62 | 22,22 | 19,05 | 23,40 | 4,93 | 5,69 | 39,60 | 31 |
| 14 | 28,71 | 23,01 | 23,82 | 20,62 | 24,90 | 4,93 | 5,69 | 41,25 | 40 |
| 16 | 31,88 | 24,61 | 26,97 | 23,80 | 28,30 | 4,93 | 5,69 | 44,45 | 49 |
| 18 | 34,24 | 26,97 | 30,18 | 26,97 | 31,10 | 4,93 | 5,69 | 47,35 | 54 |
| 20 | 36,63 | 29,36 | 33,32 | 30,15 | 34,50 | 4,93 | 5,69 | 51,90 | 62 |
| 22 | 39,80 | 31,75 | 36,53 | 33,32 | 37,50 | 4,93 | 5,69 | 54,10 | 77 |
| 24 | 43,39 | 34,92 | 39,67 | 36,50 | 40,60 | 4,93 | 5,69 | 57,25 | 88 |

Collerette ronde / Round flange

• **Version hermétique / Hermetic version**

Mode de fixation par écrou / Mounting styles with panel cutout

TYPE 7



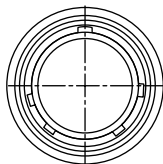
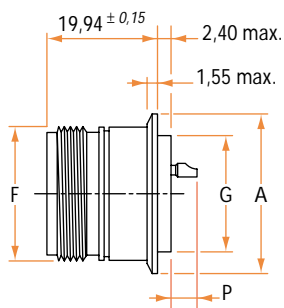
✕ Clavette principale
Principal cotter

| Taille Size | A max. | B max. | E max. | F max. | H $+0$ $-0,2$ | M max. | N $+0$ $-0,2$ | P max. | | V mini. | Masse max. (gr) Weight max. (gr) | Couple de serrage de l'écrou de panneau Tightening torque panel nut |
|----------------|-----------|-----------|-----------|-----------|---------------------|-----------|---------------------|-------------------|-------|------------|-------------------------------------|--|
| | | | | | | | | Taille/Size 20 | 16-12 | | | |
| 08 | 27,38 | 24,89 | 3,48 | 14,27 | 16,26 | 21,06 | 15,50 | 4,57 | 5,33 | 31,70 | 29 | 7m.N max. |
| 10 | 30,28 | 28,04 | 3,48 | 17,47 | 19,43 | 24,23 | 18,67 | 4,57 | 5,33 | 34,90 | 37 | 10m.N max. |
| 12 | 35,05 | 32,79 | 3,48 | 22,22 | 24,18 | 29,01 | 23,42 | 4,57 | 5,33 | 39,60 | 50 | 12m.N max. |
| 14 | 38,51 | 35,33 | 3,48 | 23,82 | 25,78 | 30,61 | 25,02 | 4,57 | 5,33 | 41,25 | 58 | 15m.N max. |
| 16 | 41,68 | 38,51 | 3,48 | 26,97 | 28,96 | 33,76 | 28,20 | 4,57 | 5,33 | 44,45 | 72 | 18m.N max. |
| 18 | 44,86 | 41,68 | 3,48 | 30,18 | 32,13 | 36,96 | 31,25 | 4,57 | 5,33 | 47,35 | 79 | 22m.N max. |
| 20 | 49,63 | 44,86 | 3,48 | 33,32 | 35,31 | 40,11 | 34,42 | 4,57 | 5,33 | 51,90 | 87 | 25m.N max. |
| 22 | 52,78 | 49,63 | 3,76 | 36,53 | 38,48 | 43,31 | 37,59 | 4,29 | 5,05 | 54,10 | 108 | 27m.N max. |
| 24 | 55,42 | 52,81 | 3,76 | 39,67 | 41,66 | 46,46 | 40,77 | 4,29 | 5,05 | 57,25 | 122 | 29m.N max. |

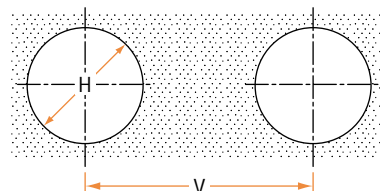
Collerette ronde à souder / Solder round flange

- Version hermétique / Hermetic version

TYPE 1



Mode de fixation collerette à braser / Mounting styles solder flange

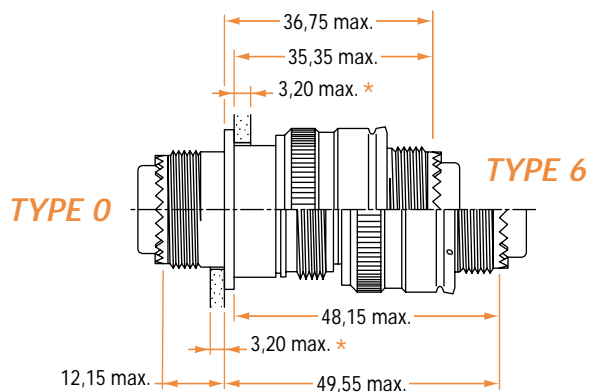


Boîtier en acier inox exempt de soufre pour soudure par bombardement électronique et laser / Stainless steel shell exempt of sulphur E.B. welding and laser

| Taille Size | A $+0$ $-0,2$ | F max. | G max. | H $+0$ $-0,2$ | P | | V mini. | Masse max. Weight max. |
|----------------|---------------------|-----------|-----------|---------------------|-------------------|-------|------------|---------------------------|
| | | | | | Taille/Size 20 | 16-12 | | |
| 08 | 18,30 | 14,27 | 12,70 | 12,96 | 4,93 | 5,69 | 31,70 | 15 |
| 10 | 21,50 | 17,47 | 14,27 | 14,53 | 4,93 | 5,69 | 34,90 | 21 |
| 12 | 26,70 | 22,22 | 19,05 | 19,30 | 4,93 | 5,69 | 39,60 | 31 |
| 14 | 27,90 | 23,82 | 20,62 | 20,88 | 4,93 | 5,69 | 41,25 | 35 |
| 16 | 30,90 | 26,97 | 23,80 | 24,05 | 4,93 | 5,69 | 44,45 | 46 |
| 18 | 34,30 | 30,18 | 26,97 | 27,25 | 4,93 | 5,69 | 47,35 | 51 |
| 20 | 37,30 | 33,32 | 30,15 | 30,40 | 4,93 | 5,69 | 51,90 | 59 |
| 22 | 40,60 | 36,53 | 33,32 | 33,58 | 4,93 | 5,69 | 54,10 | 73 |
| 24 | 43,60 | 39,67 | 36,50 | 36,75 | 4,93 | 5,69 | 57,25 | 86 |

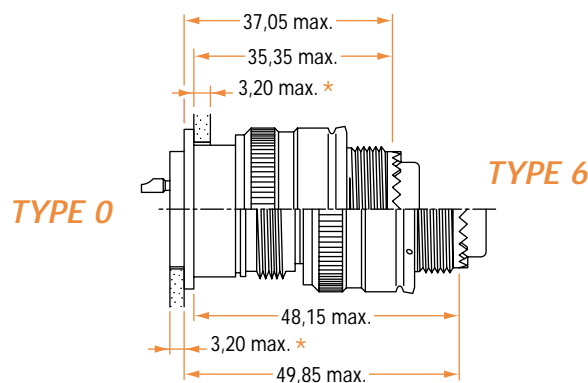
Collerette carrée / Square flange

- Version étanche / Sealed version



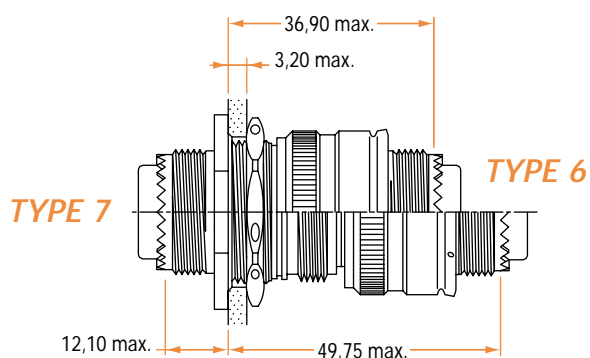
Collerette carrée / Square flange

- Version hermétique / Hermetic version



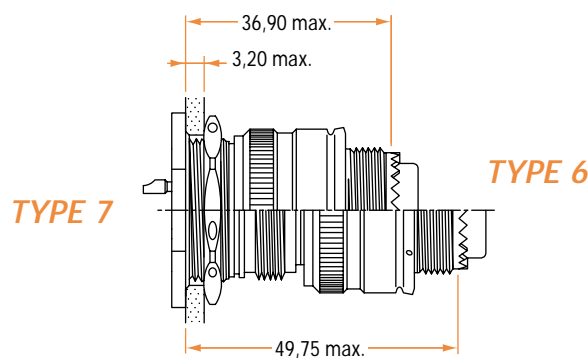
Collerette ronde / Round flange

- Version étanche / Sealed version



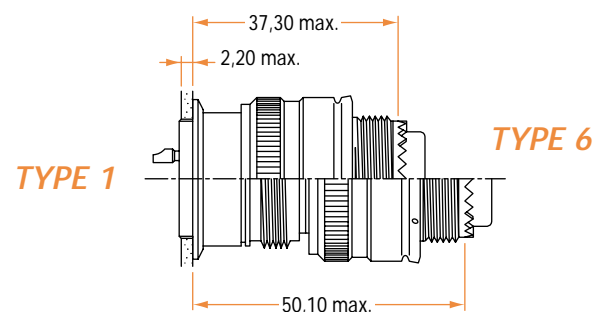
Collerette ronde / Round flange

- Version hermétique / Hermetic version



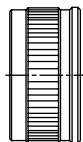
Collerette ronde à souder / Solder round flange

- Version étanche / Sealed version



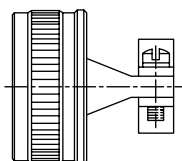
* Nota : Côte maxi. donnée avec joint plat
 Maxi dimension given with panel seal

Écrou arrière / Nut



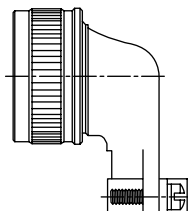
| Référence / Reference | | | |
|---|------------------------------|----------------------------|----------------------------|
| Taille / Size | Acier inox / Stainless steel | Alu. nickelé / Alu. nickel | Alu. cadmié / Alu. cadmium |
| 08 | 66240-08 | 006-0909-08 A499 | 006-0909-08 A838 |
| 10 | 66240-10 | 006-0909-10 A499 | 006-0909-10 A838 |
| 12 | 66240-12 | 006-0909-12 A499 | 006-0909-12 A838 |
| 14 | 66240-14 | 006-0909-14 A499 | 006-0909-14 A838 |
| 16 | 66240-16 | 006-0909-16 A499 | 006-0909-16 A838 |
| 18 | 66240-18 | 006-0909-18 A499 | 006-0909-18 A838 |
| 20 | 66240-20 | 006-0909-20 A499 | 006-0909-20 A838 |
| 22 | 66240-22 | 006-0909-22 A499 | 006-0909-22 A838 |
| 24 | 66240-24 | 006-0909-24 A499 | 006-0909-24 A838 |
| 28 | 66240-28 | 006-0909-28 A499 | 006-0909-28 A838 |
| Utilisable pour connecteurs / Used for connectors | | | |
| Modèles / Models | K - KE | R - RS | W - WS |
| | S - SE | | |

Serre-câble droit / Straight cable clamp



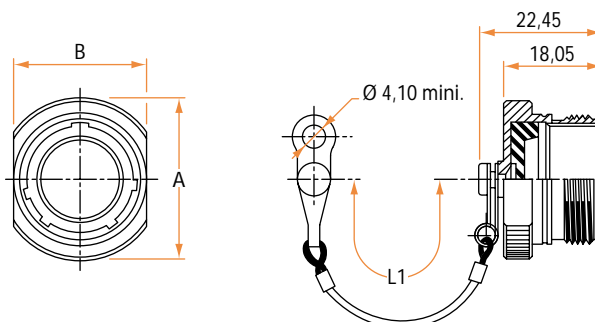
| Référence / Reference | | | |
|---|------------------------------|----------------------------|----------------------------|
| Taille / Size | Acier inox / Stainless steel | Alu. nickelé / Alu. nickel | Alu. cadmié / Alu. cadmium |
| 08 | 66241-08 A | 006-0910-08 A499 | 006-0910-08 A838 |
| 10 | 66241-10 A | 006-0910-10 A499 | 006-0910-10 A838 |
| 12 | 66241-12 A | 006-0910-12 A499 | 006-0910-12 A838 |
| 14 | 66241-14 A | 006-0910-14 A499 | 006-0910-14 A838 |
| 16 | 66241-16 A | 006-0910-16 A499 | 006-0910-16 A838 |
| 18 | 66241-18 A | 006-0910-18 A499 | 006-0910-18 A838 |
| 20 | 66241-20 A | 006-0910-20 A499 | 006-0910-20 A838 |
| 22 | 66241-22 A | 006-0910-22 A499 | 006-0910-22 A838 |
| 24 | 66241-24 A | 006-0910-24 A499 | 006-0910-24 A838 |
| Utilisable pour connecteurs / Used for connectors | | | |
| Modèles / Models | K - KE | R - RS | W - WS |
| | S - SE | | |

Serre-câble coudé / Elbowed cable clamp



| Référence / Reference | | | |
|---|------------------------------|----------------------------|----------------------------|
| Taille / Size | Acier inox / Stainless steel | Alu. nickelé / Alu. nickel | Alu. cadmié / Alu. cadmium |
| 08 | 66332-08 A | 006-0908-08 A499 | 006-0908-08 A838 |
| 10 | 66332-10 A | 006-0908-10 A499 | 006-0908-10 A838 |
| 12 | 66332-12 A | 006-0908-12 A499 | 006-0908-12 A838 |
| 14 | 66332-14 A | 006-0908-14 A499 | 006-0908-14 A838 |
| 16 | 66332-16 A | 006-0908-16 A499 | 006-0908-16 A838 |
| 18 | 66332-18 A | 006-0908-18 A499 | 006-0908-18 A838 |
| 20 | 66332-20 A | 006-0908-20 A499 | 006-0908-20 A838 |
| 22 | 66332-22 A | 006-0908-22 A499 | 006-0908-22 A838 |
| 24 | 66332-24 A | 006-0908-24 A499 | 006-0908-24 A838 |
| 28 | 66332-28 A | 006-0908-28 A499 | 006-0908-28 A838 |
| Utilisable pour connecteurs / Used for connectors | | | |
| Modèles / Models | K - KE | R - RS | W - WS |
| | S - SE | | |

Capuchon de protection pour fiche / Protective cover for plug



| Taille Size | A max. | B max. | L1 max. |
|----------------|-----------|-----------|------------|
| 08 | 18,90 | 13,20 | 95 |
| 10 | 23,25 | 18,20 | 95 |
| 12 | 27,60 | 22,20 | 95 |
| 14 | 29,20 | 24,20 | 95 |
| 16 | 32,40 | 27,20 | 95 |
| 18 | 35,15 | 31,20 | 111 |
| 20 | 38,35 | 33,20 | 111 |
| 22 | 41,10 | 36,20 | 111 |

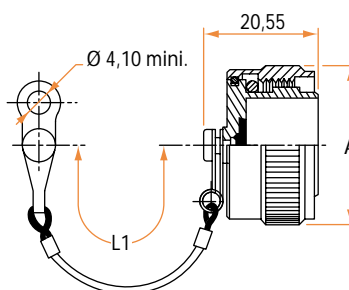
| Référence / Reference | | | |
|-----------------------|-------------------------------|-----------------------------|-----------------------------|
| Position Keying | Acier inox Stainless steel | Alu. nickelé Alu. nickel | Alu. cadmié Alu. cadmium |
| N | 983-4KE C ** | 983-4R-C ** | 983-4W-C ** |
| 6 | 983-4KE C ** | 983-4R-C ** | 983-4W-C ** |
| 7 | 983-4KE C ** | 983-4R-C ** | 983-4W-C ** |
| 8 | 983-4KE C ** | 983-4R-C ** | 983-4W-C ** |
| 9 | 983-4KE C ** | 983-4R-C ** | 983-4W-C ** |
| Y | 983-4KE C ** | 983-4R-C ** | 983-4W-C ** |

Utilisable pour connecteurs / Used for connectors

| Modèles Models | K - KE S - SE | R - RS | W - WS |
|-------------------|------------------|--------|--------|
|-------------------|------------------|--------|--------|

** : Taille boîtier / Shell size

Capuchon de protection pour embase / Protective cover for receptacle



| Taille Size | A max. | L1 max. |
|----------------|-----------|------------|
| 08 | 18,80 | 95 |
| 10 | 23,15 | 95 |
| 12 | 27,50 | 95 |
| 14 | 29,10 | 95 |
| 16 | 32,30 | 95 |
| 18 | 35,05 | 111 |
| 20 | 38,35 | 111 |
| 22 | 41,00 | 111 |

| Référence / Reference | | | |
|-----------------------|-------------------------------|-----------------------------|-----------------------------|
| Position Keying | Acier inox Stainless steel | Alu. nickelé Alu. nickel | Alu. cadmié Alu. cadmium |
| N | 983-3KE C ** | 983-3R-C ** | 983-3W-C ** |
| 6 | 983-3KE C ** | 983-3R-C ** | 983-3W-C ** |
| 7 | 983-3KE C ** | 983-3R-C ** | 983-3W-C ** |
| 8 | 983-3KE C ** | 983-3R-C ** | 983-3W-C ** |
| 9 | 983-3KE C ** | 983-3R-C ** | 983-3W-C ** |
| Y | 983-3KE C ** | 983-3R-C ** | 983-3W-C ** |

Utilisable pour connecteurs / Used for connectors

| Modèles Models | K - KE S - SE | R - RS | W - WS |
|-------------------|------------------|--------|--------|
|-------------------|------------------|--------|--------|

** : Taille boîtier / Shell size

CONTACTS MODÈLE R - RS - K - S - W - WS / CONTACTS R - RS - K - S - W - WS MODELS

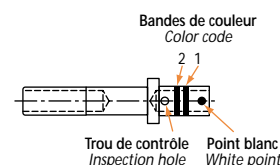
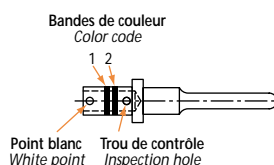
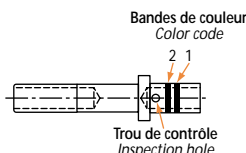
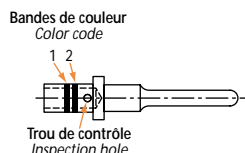
CONTACTS MODÈLE KE - SE / CONTACTS KE - SE MODELS

CONTACT MÂLE/ MALE CONTACT

CONTACT FEMELLE/ FEMALE CONTACT

CONTACT MÂLE/ MALE CONTACT

CONTACT FEMELLE/ FEMALE CONTACT



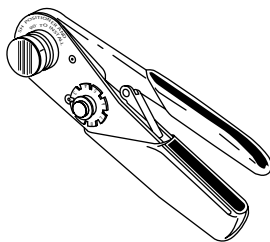
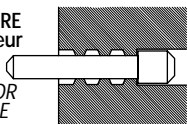
| CONTACTS / CONTACTS | | | | | CÂBLES / CABLES | | | Observations Observations | |
|---|----------------------------------|------------------|----------------|---|---|------------------------|------------------------------|---|---|
| Nouvelle/ New Reference | Ancienne/ Former Reference | Type Type | Taille Size | Couleur ou repère Mark or Color 1 2 | Section Section en/in mm ² | Taille Fil AWG Wire | Ø sur gaine Ø over sheath | | |
| Modèles / Models R - RS - K - S - W - WS | 006-0937-20 | 0641-10-2059-B | P | 20 | Rouge/Red | 0,21 à/to 0,60 | 20 à/to 24 | 0,85 à/to 2,10 | Contacts standards livrés avec le connecteur Standards contacts delivered with connector |
| | 006-0912-20 | 0603-34-2059-B | S | | | | | | |
| | 006-0937-16 | 0641-12-1659-B | P | 16 | Bleu/Blue | 0,60 à/to 1,34 | 16 à/to 20 | 1,20 à/to 2,70 | Contacts standards livrés avec le connecteur Standards contacts delivered with connector |
| | 006-0912-16 | 0603-33-1659-B | S | | | | | | |
| | 006-0937-12 | 0641-32-1259-B | P | 12 | Jaune/Yellow | 1,93 à/to 3,18 | 12 à/to 14 | 1,90 à/to 4,00 | Contacts standards livrés avec le connecteur Standards contacts delivered with connector |
| | 006-0912-12 | 0603-32-1259-B | S | | | | | | |
| | 006-0044-20 | DF 06-044-20-B | P | 20 | Violet Purple | 0,21 à/to 0,93 | 18 à/to 24 | 0,85 à/to 2,10 | Contacts à commander séparément Contacts to be ordered separately |
| | 006-0055-20 | DF 06-A-055-20-B | S | | Rouge Red | | | | |
| | 006-0972-20 | 0641-24-2059-B | P | 20 | Noir Black | 0,055 à/to 0,15 | 26 à/to 30 | 0,85 à/to 2,10 | Contacts à commander séparément Contacts to be ordered separately |
| | 006-0973-20 | 0603-21-2059-B | S | | Rouge Red | | | | |
| | 006-1102-16 | - | P | 16 | Orange Orange | 0,93 à/to 1,91 | 14 à/to 18 | 1,20 à/to 2,70 | Contacts à commander séparément Contacts to be ordered separately |
| | 006-1104-16 | - | S | | Bleu Blue | | | | |
| | 182-0450-16 | - | P | 16 | Rouge Red | 0,25 à/to 0,60 | 20 à/to 24 | 1,20 à/to 2,70 | Contacts à commander séparément Contacts to be ordered separately |
| | 182-0451-16 | - | S | | Bleu Blue | | | | |
| 025-0870-16 | - | P | 16 | Noir Black | 0,055 à/to 0,60 | 26 à/to 30 | 1,20 à/to 2,70 | Contacts à commander séparément Contacts to be ordered separately | |
| 025-0871-16 | - | S | | Bleu Blue | | | | | |
| Modèles / Models KE - SE | 097-0015-20 | 45045-A | P | 20 | Rouge/Red | 0,22 à/to 0,60 | 20 à/to 24 | 0,85 à/to 2,10 | Contacts standards livrés avec le connecteur Standards contacts delivered with connector |
| | 097-0016-20 | 45109-A | S | | | | | | |
| | 097-0047-20 | 47815-A | P | 20 | Bleu Blue | 0,22 | 24 | 1 | Contacts à commander séparément Contacts to be ordered separately |
| | 097-0053-20 | 47816-A | S | | Rouge Red | | | | |
| | 097-0014-16 | - | P | 16 | Bleu/Blue | 0,60 à/to 1,34 | 16 à/to 20 | 1,20 à/to 2,70 | Contacts standards livrés avec le connecteur Standards contacts delivered with connector |
| | 097-0013-16 | - | S | | | | | | |
| | 097-0177-16 | - | P | 16 | Bleu Blue | 1,91 | 14 | 1,20 à/to 2,70 | Contacts à commander séparément Contacts to be ordered separately |
| | 097-0178-16 | - | S | | Orange Orange | | | | |
| 097-0165-12 | - | P | 12 | Jaune/Yellow | 1,91 à/to 3,18 | 12 à/to 14 | 1,90 à/to 4,00 | Contacts standards livrés avec le connecteur Standards contacts delivered with connector | |
| 097-0166-12 | - | S | | | | | | | |

Contacts de puissance K6 / Contact's force K6

Pour les arrangements 20-04 et 28-06 uniquement / For arrangements 20-04 and 28-06 only

| KIT CONTACT (CONTACTS + MANCHON) CONTACT KIT (CONTACTS + SLEEVE) | | | REPÉRAGE COULEUR / COLOR SPOTTING | | OUTILLAGES / TOOLS | | |
|---|---------------|----------------|--------------------------------------|-------------------|---------------------------------|----------------------------|-------------------------------|
| Ref. Com. Comm. Ref. | Genre Type | Taille Size | Bande 1 Band 1 | Bande 2 Band 2 | Pince à sertir Crimping tool | Positionneur Positioner | Extracteur Extraction tool |
| 182-0672-06 | P | 6 | Vert/green | Vert/green | M22520/23-01 | M22520/23-03 | 025-0711-06 |
| 182-0673-06 | S | | | | | | |
| 182-0672-08 | P | 8 | Vert/green | Rouge/red | M22520/23-01 | M22520/23-02 | 025-0711-06 |
| 182-0673-08 | S | | | | | | |
| 182-0672-10 | P | 10-12 | Vert/green | Marron/brown | M22520/23-01 | TP1498 | 025-0711-06 |
| 182-0673-10 | S | | | | | | |

FACE ARRIERE
du connecteur
CONNECTOR
REAR FACE



| OBTURATEURS / SEALING PLUG | | OUTILLAGE / TOOLS | | | |
|----------------------------|----------------------------|----------------------------------|----------------------------------|------------------------------------|--------------------------------------|
| Référence Reference | Code couleur Color code | Pince à sertir Crimping tool | Butée Pilot shop | Outil/Tool Insertion/Extraction | Dénudage en mm Strip length in mm |
| 097-0140-20 | Rouge/Red | 057-0461-11 | 057-0462-21 | M 15570-20 | 4,00 à/to 5,50 |
| 097-0139-16 | Bleu/Blue | M22520/1-01 ou/or 057-0461-11 | M22520/1-02 ou/or 057-0462-21 | M 15570-16 | 6,40 à/to 8,00 |
| 097-0138-12 | Jaune/Yellow | 057-0461-11 | 057-0462-21 | M 15570-12 | 6,40 à/to 8,00 |
| 097-0140-20 | Rouge/Red | 057-0461-11 | 057-0462-21 | M 15570-20 | 4,00 à/to 5,50 |
| 097-0140-20 | Rouge/Red | 057-0461-11 | 057-0462-21 | M 15570-20 | 4,00 à/to 5,50 |
| 097-0139-16 | Bleu/Blue | 057-0461-11 | 057-0462-21 | M 15570-16 | 6,40 à/to 8,00 |
| 097-0139-16 | Bleu/Blue | 057-0461-11 | 057-0462-21 | M 15570-16 | 6,40 à/to 8,00 |
| 182-0456-16 | Bleu/Blue | 057-0461-11 | 057-0462-21 | M 15570-16 | 6,40 à/to 8,00 |
| 182-0456-20 | Rouge/Red | 057-0461-11 | 057-0462-21 | M 15570-20 | 4,00 à/to 5,50 |
| 182-0456-20 | Rouge/Red | 057-0461-11 | 057-0462-21 | M 15570-20 | 4,00 à/to 5,50 |
| 182-0456-16 | Bleu/Blue | 057-0461-11 | 057-0462-21 | M 15570-16 | 6,40 à/to 8,00 |
| 097-0139-16 | Bleu/Blue | 057-0461-11 | 057-0462-21 | M 15570-16 | 6,40 à/to 8,00 |
| 097-0138-12 | Jaune/Yellow | 057-0461-11 | 057-0462-21 | M 15570-12 | 6,40 à/to 8,00 |

Contacts Quadrax / Quadrax contact

Pour les arrangements 18-02, 20-04 et 28-06 / For arrangements 18-02, 20-04 and 28-06

| KIT CONTACT (CONTACTS + MANCHON) CONTACT KIT (CONTACTS + SLEEVE) | | | | OUTILLAGES / TOOLS | | |
|---|------------------------|---------------|----------------|-----------------------------------|---------------------------|--------------------------|
| Arrangements Arrangements | Ref. Com. Com. Ref. | Genre Type | Taille Size | Pour les contacts For contacts | Pour le corps For body | Extraction Extraction |
| 18-02 | 182-0611-08 | P | 8 | M22520/2-01-K709 | M22520/5-01 | 025-0711-06 |
| 18-02 | 182-0612-08 | S | 8 | M22520/2-01-K709 | M22520/5-45B | 025-0711-06 |
| 20-04 | 182-0611-08 | P | 8 | M22520/2-01-K709 | M22520/5-01 | 025-0711-06 |
| 20-04 | 182-0612-08 | S | 8 | M22520/2-01-K709 | M22520/5-45B | 025-0711-06 |
| 28-06 | 182-0611-08 | P | 8 | M22520/2-01-K709 | M22520/5-01 | 025-0711-06 |
| 28-06 | 182-0612-08 | S | 8 | M22520/2-01-K709 | M22520/5-45B | 025-0711-06 |

Thermo-couple contact / Thermo-coupling contact

| CONTACTS / CONTACTS | | | | | | | | | | | |
|--|---------------|--|---|-----|----|------------------------------------|-------------------------|------------------------|------------------------|------|---------------------------|
| Référence Commercial <i>Commercial Reference</i> | Genre Type | Taille index <i>Size index</i> | Référence ancienne <i>Old reference</i> | MIL | EN | Code couleur <i>Colour code</i> | | | | Rep. | Observ. <i>Observ.</i> |
| | | | | | | 1 | 2 | 3 | ind. | | |
| 006-1186-20 006-1187-20 | P S | 20 | 006-1131-20A 006-1134-20A | - | - | Rouge <i>Red</i> | Rouge <i>Red</i> | - | Jaune <i>Yellow</i> | Ch | Ch |
| 006-1188-20 006-1189-20 | P S | 20 | 097-0173-20 097-0036-20 | - | - | Rouge <i>Red</i> | Rouge <i>Red</i> | - | Noir <i>Black</i> | AI | AI |
| 006-1188-20 006-1189-20 | P S | 20 | - | - | - | Marron <i>Brown</i> | Orange <i>Orange</i> | Jaune <i>Yellow</i> | - | AI | AI |
| 006-1131-20 006-1134-20 | P S | 20 | 0641-14-2001 0603-16-2001 | - | - | Noir <i>Black</i> | - | - | - | Ch | Ch |
| 006-1132-20 006-1133-20 | P S | 20 | 0641-15-2001 0603-15-2001 | - | - | Orange <i>Orange</i> | - | - | - | AI | AI |
| 025-0402-20 006-0403-20 | P S | 20 | - | - | - | Violet <i>Purple</i> | Rouge <i>Red</i> | - | Noir <i>Black</i> | AI | ■ |
| 025-0404-20 025-0405-20 | P S | 20 | - | - | - | Violet <i>Purple</i> | Rouge <i>Red</i> | - | Jaune <i>Yellow</i> | Ch | ■ |
| 006-0982-16 006-0037-16 | P S | 16 | - | - | - | - | - | - | - | Ch | Ch |
| 006-0983-16 006-0036-16 | P S | 16 | 097-0173-16 097-0175-16 | - | - | - | - | - | - | AI | AI |

■ Fût standard / Standard barrel

| CÂBLES / CABLES | | OBTURATEUR / SEALING PLUG | | Pince à sertir / Crimping tool (Voir annexe équivalence / See crossed P/N attached document) | | Outil de montage et de démontage Insertion and extraction tool | |
|--|----------------------|------------------------------|------------------|--|---------------------|--|------------|
| Section mini - max mm ² | Gauge AWG wire | MIL | | Référence Reference | Butée Pilot stop | Contact câblés Wired contact | |
| | | Référence Reference | Couleur Color | | | Insertion | Extraction |
| 0,21 - 0,60 | 20 - 24 | 006-0893-20 | Rouge/Red | M 22520/1-01 | M 22520/1-02 | M 15570-20 | M 15570-20 |
| 0,21 - 0,60 | 20 - 24 | 006-0893-20 | Rouge/Red | M 22520/1-01 | M 22520/1-02 | M 15570-20 | M 15570-20 |
| 0,21 - 0,60 | 20 - 24 | 006-0893-20 | Rouge/Red | M 22520/1-01 | M 22520/1-02 | M 15570-20 | M 15570-20 |
| 0,21 - 0,60 | 20 - 24 | 006-0893-20 | Rouge/Red | M 22520/1-01 | M 22520/1-02 | M 15570-20 | M 15570-20 |
| 0,21 - 0,60 | 20 - 24 | 006-0893-20 | Rouge/Red | M 22520/1-01 | M 22520/1-02 | M 15570-20 | M 15570-20 |
| 0,38 - 0,93 | 12-22 | 006-0893-20 | Rouge/Red | M 22520/1-01 | M 22520/1-02 | M 15570-20 | M 15570-20 |
| 0,38 - 0,93 | 12-22 | 006-0893-20 | Rouge/Red | M 22520/1-01 | M 22520/1-02 | M 15570-20 | M 15570-20 |
| 0,60 - 1,34 | 16-20 | 006-0893-16 | Bleu/Blue | M 22520/1-01 | M 22520/1-02 | M 15570-16 | M 15570-16 |
| 0,60 - 1,34 | 16-20 | 006-0893-16 | Bleu/Blue | M 22520/1-01 | M 22520/1-02 | M 15570-16 | M 15570-16 |



INOGIA
DISTRIBUTION

E-mail : info@inogia.com - Tel. : +33 1 34 61 80 84

www.inogia.com