

# AMPSEAL HOUSINGS



AMP | AMPSEAL

TE Model # CAT-AM78-CH8172

TE Internal #: CAT-AM78-CH8172

[View on TE.com >](#)

AMPSEAL housings are available in multiple keyed color options.



[Connectors > Automotive, Truck, Bus, & Off-Road Connectors > Automotive, Truck, Bus, & Off-Road Housings](#)

AMPSEAL receptacle housings are environmentally sealed and available in 8, 14, 23, and 35 cavity arrangements. They accept size 1.3 mm contacts (up to 17 amps gold, up to 8 amps tin) and feature an integrated latch for mating.



Connector Style: **Housing for female terminals**

Mating Pin Diameter: **1.3 mm**

Centerline (Pitch): **4 mm**

Sealable: **Yes**

Hybrid Connector: **No**

## Series Overview

- Accepts contact size 1.3 mm (up to 17 amps gold, up to 8 amps tin)
- 16-20 AWG (1.25-0.50 mm<sup>2</sup>)
- 8, 14, 23, and 35 cavity arrangements
- PCB mount
- Rectangular, thermoplastic housing
- Integrated latch for mating
- Integrated wedgelock confirms contact alignment and retention
- Available accessories: Wire relief

## [AMPSEAL Connector Overview & Assembly Instructions \(English\)](#)

Learn about our rugged AMPSEAL connectors for cable-to-board harsh environment applications. Watch this video for an overview of the connectors and for step-by-step instructions on inserting and removing contacts, as well as mating and unmating.

## Additional AMPSEAL Products

### [VIEW ALL AMPSEAL PRODUCTS](#)

AMPSEAL connectors provide rugged reliability and environmental sealing. They are available in cable plugs and PCB mount headers that are designed to stand up to high-temperature underhood applications.

## Features

### Product Type Features

Connector Style	Housing for female terminals
Connector System	Wire-to-Board, Wire-to-Device
Sealable	Yes
Hybrid Connector	No
Primary Locking Feature	Integrated in Housing

### Configuration Features

Number of Positions	8, 14, 23, 35
Number of Rows	3

### Electrical Characteristics

Nominal Voltage Architecture (V)	12, 24, 42, 48, 80, 90, 125, 240, 250
----------------------------------	---------------------------------------

### Body Features

Color	Black, Blue, Gray, Natural, Orange
Connector Code	1

### Contact Features

Mating Pin Diameter (mm)	1.3
Mating Pin Diameter (in)	.051

### Mechanical Attachment

Connector Mounting Type	Board Mount
-------------------------	-------------

### Housing Features

Centerline (Pitch) (mm)	4
Centerline (Pitch) (in)	.157

### Usage Conditions

--	--

## AMPSEAL HOUSINGS

TE Model # CAT-AM78-CH8172  
TE Internal #: CAT-AM78-CH8172



Operating Temperature Range (°C)	-40 - 125
----------------------------------	-----------

Operating Temperature Range (°F)	-40 - 257
----------------------------------	-----------

### Operation/Application

Circuit Application	Power & Signal
---------------------	----------------

### Industry Standards

Degree of Protection	IP6K9K
----------------------	--------

### Other

Connector Position Assurance Capable	No
--------------------------------------	----

SEE PRODUCTS ON NEXT PAGE

# AMPSEAL HOUSINGS

TE Model # CAT-AM78-CH8172  
TE Internal #: CAT-AM78-CH8172



## Products (1 of 4)



14POS,AMPSEAL,SOC HSG ASSY,SLD,COD 2



14POS,AMPSEAL,SOC HSG ASSY,SLD,COD 4



23POS,AMPSEAL,SOC HSG ASSY,SLD,COD 4



23POS,AMPSEAL,SOC HSG ASSY,SLD,COD 2

TE Part #	776273-2	776273-4	770680-4	770680-2
Connector System	Wire-to-Board	Wire-to-Board	Wire-to-Board	Wire-to-Board
Number of Positions	14	14	23	23
Color	Natural	Gray	Gray	Natural
Nominal Voltage Architecture	90 V	80 V, 90 V, 125 V, 240 V	12 V, 42 V, 48 V, 90 V, 125 V, 240 V	250 V
Circuit Application	Power & Signal	Power & Signal	Power & Signal	Power & Signal
Connector Mounting Type				
Connector Code				
EU RoHS Directive 2011/65 /EU	EU RoHS Compliant	EU RoHS Compliant	EU RoHS Compliant	EU RoHS Compliant
EU ELV Directive 2000/53 /EC	EU ELV Compliant	EU ELV Compliant	EU ELV Compliant	EU ELV Compliant
Product Families	AMP	AMP	AMP	AMP
Series	AMPSEAL	AMPSEAL	AMPSEAL	AMPSEAL

**\*EU RoHS Directive 2011/65/EU**

These products comply with the substance restrictions of the Restriction on Hazardous Substances Directive 2011/65/EU (RoHS2). The RoHS2 Directive requires that certain electrical and electronic equipment products do not contain mercury, cadmium, hexavalent chromium, PBB, PBDE, lead, DEHP, BBP, DBP and DIBP above defined thresholds. Products indicated as 'Compliant' do not contain any of these substances above the prohibition thresholds. Finished electrical and electronic equipment products will be CE marked as required by the Directive. Components may not be CE marked.

**\*\*EU ELV Directive 2000/53/EC**

These products comply with the substance restrictions of the End of Life Vehicles Directive 2000/53/EC (ELV). The ELV Directive requires that materials and components of vehicles do not contain mercury, cadmium, hexavalent chromium, and lead above defined thresholds. Products indicated as 'Compliant' do not contain any of these substances above the prohibition thresholds.

# AMPSEAL HOUSINGS

TE Model # CAT-AM78-CH8172  
TE Internal #: CAT-AM78-CH8172



## Products (2 of 4)



23POS,AMPSEAL,SOC HSG ASSY,SLD,COD 5



35POS,AMPSEAL,SOC HSG ASSY,SLD,COD 6



35POS,AMPSEAL,SOC HSG ASSY,SLD,COD 5



35POS,AMPSEAL,SOC HSG ASSY,SLD,COD 4

TE Part #	770680-5	776164-6	776164-5	776164-4
Connector System	Wire-to-Board	Wire-to-Board	Wire-to-Device	Wire-to-Board
Number of Positions	23	35	35	35
Color	Blue	Orange	Blue	Gray
Nominal Voltage Architecture	42 V, 48 V, 90 V, 125 V, 240 V	250 V	12 V, 24 V, 42 V, 48 V, 80 V, 90 V, 125 V, 240 V	250 V
Circuit Application	Power & Signal	Power & Signal	Power & Signal	Power & Signal
Connector Mounting Type				
Connector Code				
EU RoHS Directive 2011/65 /EU	EU RoHS Compliant	EU RoHS Compliant	EU RoHS Compliant	EU RoHS Compliant
EU ELV Directive 2000/53 /EC	EU ELV Compliant	EU ELV Compliant	EU ELV Compliant	EU ELV Compliant
Product Families	AMP	AMP	AMP	AMP
Series	AMPSEAL	AMPSEAL	AMPSEAL	AMPSEAL

**\*EU RoHS Directive 2011/65/EU**

These products comply with the substance restrictions of the Restriction on Hazardous Substances Directive 2011/65/EU (RoHS2). The RoHS2 Directive requires that certain electrical and electronic equipment products do not contain mercury, cadmium, hexavalent chromium, PBB, PBDE, lead, DEHP, BBP, DBP and DIBP above defined thresholds. Products indicated as 'Compliant' do not contain any of these substances above the prohibition thresholds. Finished electrical and electronic equipment products will be CE marked as required by the Directive. Components may not be CE marked.

**\*\*EU ELV Directive 2000/53/EC**

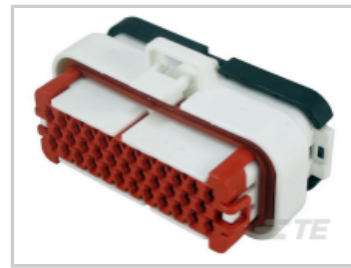
These products comply with the substance restrictions of the End of Life Vehicles Directive 2000/53/EC (ELV). The ELV Directive requires that materials and components of vehicles do not contain mercury, cadmium, hexavalent chromium, and lead above defined thresholds. Products indicated as 'Compliant' do not contain any of these substances above the prohibition thresholds.

# AMPSEAL HOUSINGS

TE Model # CAT-AM78-CH8172  
TE Internal #: CAT-AM78-CH8172



## Products (3 of 4)



35POS, AMPSEAL, SOC HSG ASSY, SLD, COD 2



23POS, AMPSEAL, SOC HSG ASSY, SLD, COD 1



8POS, AMPSEAL, SOC HSG ASSY, SLD, COD 1



14POS, AMPSEAL, SOC HSG ASSY, SLD, COD 1

TE Part #	776164-2	770680-1	776286-1	776273-1
Connector System	Wire-to-Board	Wire-to-Board	Wire-to-Board, Wire-to-Device	Wire-to-Board
Number of Positions	35	23	8	14
Color	Natural	Black	Black	Black
Nominal Voltage Architecture	250 V	12 V, 42 V, 48 V, 240 V	12 V, 24 V, 42 V, 48 V, 80 V, 90 V, 125 V, 240 V	250 V
Circuit Application	Power & Signal	Power & Signal		
Connector Mounting Type				
Connector Code				
EU RoHS Directive 2011/65 /EU	EU RoHS Compliant	EU RoHS Compliant	EU RoHS Compliant	EU RoHS Compliant
EU ELV Directive 2000/53 /EC	EU ELV Compliant	EU ELV Compliant	EU ELV Compliant	EU ELV Compliant
Product Families	AMP	AMP	AMP	AMP
Series	AMPSEAL	AMPSEAL	AMPSEAL	AMPSEAL

**\*EU RoHS Directive 2011/65/EU**

These products comply with the substance restrictions of the Restriction on Hazardous Substances Directive 2011/65/EU (RoHS2). The RoHS2 Directive requires that certain electrical and electronic equipment products do not contain mercury, cadmium, hexavalent chromium, PBB, PBDE, lead, DEHP, BBP, DBP and DIBP above defined thresholds. Products indicated as 'Compliant' do not contain any of these substances above the prohibition thresholds. Finished electrical and electronic equipment products will be CE marked as required by the Directive. Components may not be CE marked.

**\*\*EU ELV Directive 2000/53/EC**

These products comply with the substance restrictions of the End of Life Vehicles Directive 2000/53/EC (ELV). The ELV Directive requires that materials and components of vehicles do not contain mercury, cadmium, hexavalent chromium, and lead above defined thresholds. Products indicated as 'Compliant' do not contain any of these substances above the prohibition thresholds.

# AMPSEAL HOUSINGS

TE Model # CAT-AM78-CH8172  
TE Internal #: CAT-AM78-CH8172



## Products (4 of 4)



35POS,AMPSEAL,SOC HSG ASSY,SLD,COD 1



8POS,AMPSEAL,SOC HSG ASSY,SLD,COD 2



14POS,AMPSEAL,SOC HSG ASSY,SLD,COD 5



23POS,AMPSEAL,SOC HSG ASSY,SLD,COD 1

TE Part #	776164-1	776286-2	776273-5	770680-3
Connector System	Wire-to-Device	Wire-to-Board, Wire-to-Device	Wire-to-Board	Wire-to-Board
Number of Positions	35	8	14	23
Color	Black	Natural	Blue	Black
Nominal Voltage Architecture	250 V	12 V, 24 V, 42 V, 48 V, 80 V, 90 V, 125 V, 240 V	250 V	90 V
Circuit Application	Power & Signal		Power & Signal	Power & Signal
Connector Mounting Type			Board Mount	Board Mount
Connector Code	1			1
EU RoHS Directive 2011/65 /EU	EU RoHS Compliant	EU RoHS Compliant	EU RoHS Compliant	EU RoHS Compliant
EU ELV Directive 2000/53 /EC	EU ELV Compliant	EU ELV Compliant	EU ELV Compliant	EU ELV Compliant
Product Families	AMP	AMP	AMP	AMP
Series	AMPSEAL	AMPSEAL	AMPSEAL	AMPSEAL

**\*EU RoHS Directive 2011/65/EU**

These products comply with the substance restrictions of the Restriction on Hazardous Substances Directive 2011/65/EU (RoHS2). The RoHS2 Directive requires that certain electrical and electronic equipment products do not contain mercury, cadmium, hexavalent chromium, PBB, PBDE, lead, DEHP, BBP, DBP and DIBP above defined thresholds. Products indicated as 'Compliant' do not contain any of these substances above the prohibition thresholds. Finished electrical and electronic equipment products will be CE marked as required by the Directive. Components may not be CE marked.

**\*\*EU ELV Directive 2000/53/EC**

These products comply with the substance restrictions of the End of Life Vehicles Directive 2000/53/EC (ELV). The ELV Directive requires that materials and components of vehicles do not contain mercury, cadmium, hexavalent chromium, and lead above defined thresholds. Products indicated as 'Compliant' do not contain any of these substances above the prohibition thresholds.

## Related Materials

### Catalog

#### [AMPSEAL Connector Series \(English\)](#)

AMPSEAL connectors are designed for cable-to-board harsh environment applications. Environmentally sealed for rugged reliability, these connectors are available in cable plugs and PCB mount headers engineered to withstand extreme temperature and moisture, including high-temperature underhood applications.

English

### Product Specifications

#### [AMPSEAL Connectors Product Specifications \(English\)](#)

This specification covers performance tests and quality requirements for AMPSEAL connectors.

English

### Application Specifications

#### [AMPSEAL Connectors Application Specifications \(English\)](#)

This specification covers the requirements for the application of the AMPSEAL plug connector and header assembly.

English

### Connector Selector

#### [Connector Selector \(English\)](#)

The Connector Selector is a reference guide to TE Connectivity's (TE) Industrial & Commercial Transportation electrical connectors.

English

### Flipbook Catalog

#### [Industrial & Commercial Transportation - Terminals and Connectors \(English\)](#)

TE's Industrial & Commercial Transportation Terminals and Connectors flipbook catalog features AMPSEAL, AMPSEAL 16, Circular DIN, DEUTSCH, HDSCS, LEAVYSEAL, and Superseal 1.0 connectors, contacts, tools, and accessories.

English

## Also in the Series | AMPSEAL



Automotive Connector Caps & Covers(5)



Automotive Seals & Cavity Plugs(1)



Automotive, Truck, Bus, & Off-Road Headers(111)



Automotive, Truck, Bus, & Off-Road Housings(16)



Automotive, Truck, Bus, & Off-Road Terminals(4)



## AMPSEAL HOUSINGS

TE Model # CAT-AM78-CH8172  
TE Internal #: CAT-AM78-CH8172



AMPSEAL, TE Connectivity, and TE connectivity (logo) are trademarks.