



DEUTSCH



NGC Series

4, 6 & 12 poles

Signal connector according to NF F 61-030

■ **Technical Characteristics**

Electrical

Insulation Resistance : > 5000 MΩ
Crimp Contact : AWG16 (0,5 à 2,5 mm²)
Cable Capacities :
EN 50306-2 cat. M : 0,5 to 2,5 mm²
EN 50264-2-1 & EN 50264-3-1 (type 0.6/1 kV) : up to 1,5 mm²
Grommet Capacity : Ø 1,15 to 2,85 mm
Service Voltage : 220 V AC/DC according NF F 61-030
500 V AC/DC according EN 50124-1/A2 (OV3-PD2)
Withstanding voltage : 2550 V according NF F 61-030
3500 V according to EN 50124-1/A2 (OV3-PD2)
Nominal Current : up to 20 A

Physico-chimique

Service Temperature : -40°C +100°C (-40°F +212°F)
Salt Spray > 250 hours
Protection Index : IP 66 mated according to EN 60529
Fluid Resistance : gasoil, mineral oil, acid, base and cutting fluid

Material

Contact : Gold or silver plated brass
Female and Male Shells : Fiber glass reinforced polyamide
Fire & Smoke :
Requirement 2 according to NF F 16-101 & NF F 16-102
UL94V0
Grommet and Interfacial Seal : Silicone
Fire & Smoke :
Requirement 2 according to NF F 16-101 & NF F 16-102

Mechanical

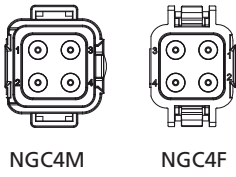
Durability : 500 mating cycles
Vibration & Shocks resistance : category 1 class B according to EN 61373

Wiring Implementation Instructions

See FT10029

Arrangements

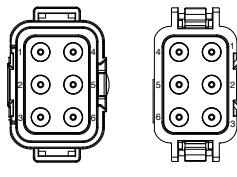
Size 4



NGC4M

NGC4F

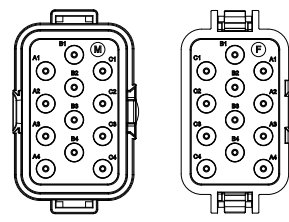
Size 6



NGC6M

NGC6F

Size 12

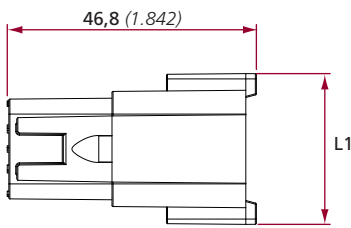


NGC12M

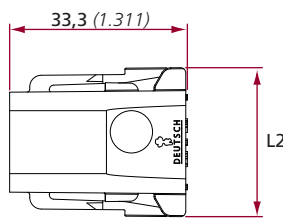
NGC12F

M : Male - F : Female

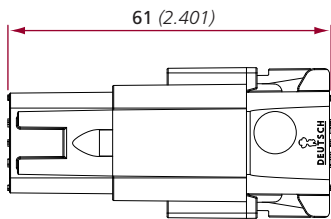
Part Numbers & Dimensions



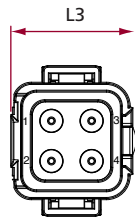
Male Plug



Female Plug



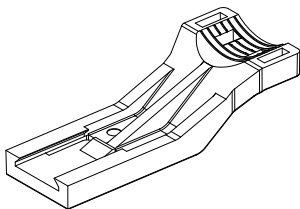
Mated Connector



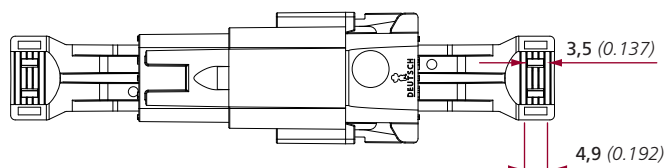
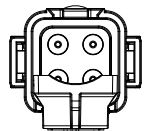
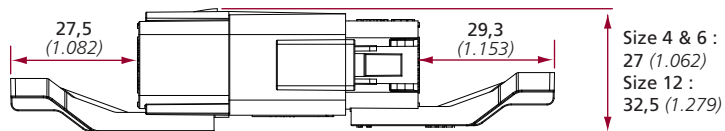
Size	Part Number	L1	L2	L3	Weight*
4	NGC4F	28,5 (1.122)	28,2 (1.110)	23,7 (0.933)	14,9 g
	NGC4M				17 g
6	NGC6F	36,2 (1.425)	35,9 (1.413)	23,7 (0.933)	20,4 g
	NGC6M				23 g
12	NGC12F	47,6 (1.874)	47,3 (1.862)	29,3 (1.153)	36,8 g
	NGC12M				38,5 g

mm / (inch)

Accessory : Strain Relief (mm/inch)

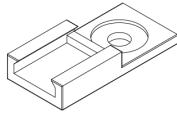


Part Number : **NGCASC**

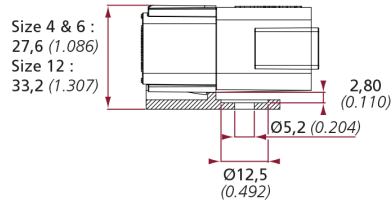


Cables tightening with a plastic collar

Accessory for Male Plug only : Panel Bracket (mm/inch)



Part Number : **NGCAFP**



Contacts



Caliber	Plating	Cable section	Part Number MALE	Crimping Tool	Locator	Insertion Tool	Extraction Tool
Ø1,6 mm	Ag	0,5 to 1,82 mm ² (AWG 20 to 15)	SRCS205589-A00	OUT0405-0167AS0 (FT8)	OUTS208448	OUT0405-0337AS	OUTEXT-0321
Ø1,6 mm	Au	0,5 to 1,82 mm ² (AWG 20 to 15)	SRCS205589-A01	OUT0405-0167AS0 (FT8)	OUTS208448	OUT0405-0337AS	OUTEXT-0321
Ø1,6 mm	Ag	1,34 to 2,61 mm ² (AWG 15 to 13)	SRCS209432-A00	OUT0405-0167AS0 (FT8)	OUTS208448	OUT0405-0337AS	OUTEXT-0321
Ø1,6 mm	Au	1,34 to 2,61 mm ² (AWG 15 to 13)	SRCS209432-A01	OUT0405-0167AS0 (FT8)	OUTS208448	OUT0405-0337AS	OUTEXT-0321

Caliber	Plating	Cable section	Part Number FEMALE	Crimping Tool	Locator	Insertion Tool	Extraction Tool
Ø1,6 mm	Ag	0,5 to 1,82 mm ² (AWG 20 to 15)	SRCS202416-A00	OUT0405-0167AS0 (FT8)	OUT0405-0176AS (TP1012)	OUT0405-0337AS	OUTEXT-0321
Ø1,6 mm	Au	0,5 to 1,82 mm ² (AWG 20 to 15)	SRCS202416-A01	OUT0405-0167AS0 (FT8)	OUT0405-0176AS (TP1012)	OUT0405-0337AS	OUTEXT-0321
Ø1,6 mm	Ag	1,34 to 2,61 mm ² (AWG 15 to 13)	SRCS202420-A00	OUT0405-0167AS0 (FT8)	OUT0405-0176AS (TP1012)	OUT0405-0337AS	OUTEXT-0321
Ø1,6 mm	Au	1,34 to 2,61 mm ² (AWG 15 to 13)	SRCS202420-A01	OUT0405-0167AS0 (FT8)	OUT0405-0176AS (TP1012)	OUT0405-0337AS	OUTEXT-0321

Ag : Silver plated - Au : Gold plated



INOGIA
DISTRIBUTION

E-mail : info@inogia.com - Tel. : +33 1 34 61 80 84

www.inogia.com