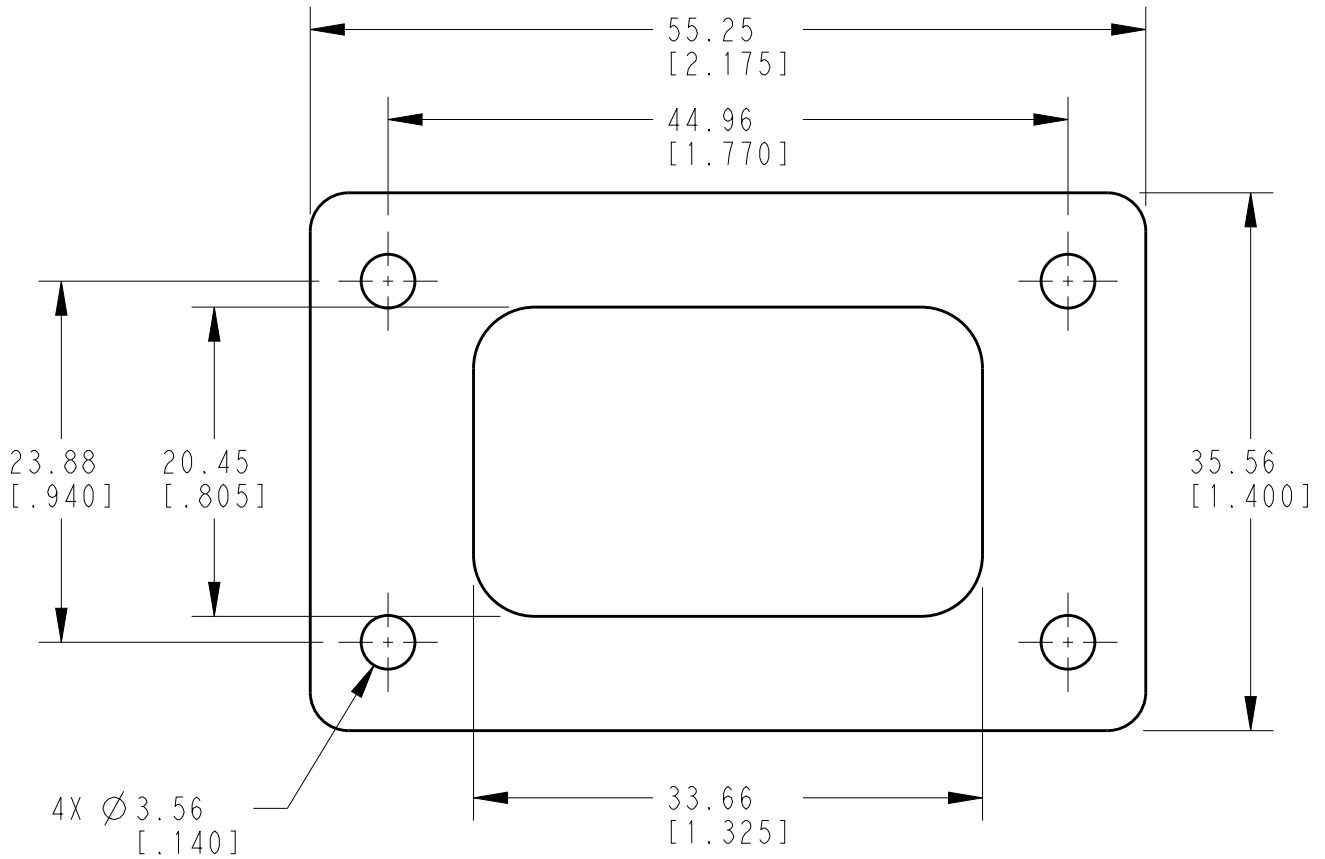


LOC	DIST	REVISIONS					
		P	LTR	DESCRIPTION	DATE	DWN	APVD
			A	NEW RELEASE PER ECO-14-008764	27JUN2014	DM	DM
			A1	REVISED PER ECO-16-013409	12SEP2016	JA	DM



5. THIS ACCESSORY PART IS PROVIDED WITHOUT TYPICAL TRANSPORTATION INDUSTRY PROCESS CONTROLS. NO VALIDATION TESTING HAS BEEN PERFORMED. CUSTOMER IS RESPONSIBLE FOR DETERMINING PRODUCT PERFORMANCE AND SUITABILITY FOR APPLICATION.
4. THICKNESS: 3.18 [ .125].
3. PART NO. DT12-L012-GKT
2. TEMPERATURE RATING: -57°C TO +107°C [-70°F TO +225°F).
1. THIS PART IS USED ON DT04-12PX-L012 AND DTM04-12PX-L012 (X = A, B, C, D KEYS) RECEPTACLES.

THIS DRAWING IS UNPUBLISHED. BY TE CONNECTIVITY © COPYRIGHT 2014 ALL RIGHTS RESERVED. 2016 RELEASED FOR PUBLICATION

DIMENSIONS: mm [INCH]	DWN D.MEYER	27JUN2014	MATERIAL	CLD CELL SPONGE	FINISH	
	CHK R.MESSENGER	27JUN2014				
TOLERANCES UNLESS OTHERWISE SPECIFIED:	APVD D.MEYER	27JUN2014				NAME
0 PLC ±	PRODUCT SPEC		SIZE	CAGE CODE	DRAWING NO	RESTRICTED TO
1 PLC ±	APPLICATION SPEC		A 4	4AFU8	DT12-L012-GKT	
2 PLC ±0.63 [.025]			WEIGHT	0.91g		
3 PLC ±			CUSTOMER DRAWING	SCALE	2:1	SHEET 1 OF 1
4 PLC ±						REV A1
ANGLES ±0°30'0"						