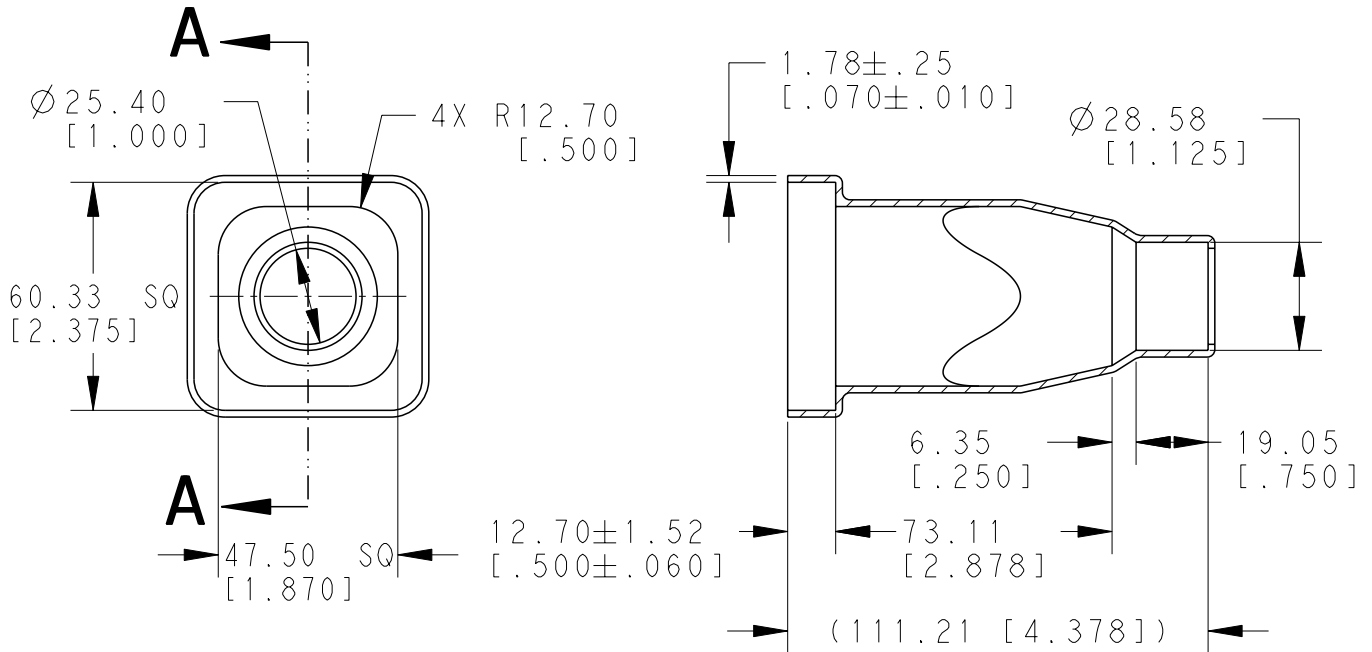


REVISIONS

P	LTR	DESCRIPTION	DATE	DWN	APVD
	A	NEW RELEASE PER ECO-14-009834	28JUN2014	DM	DM
	A1	REVISED PER PCN E-18-005300	28MAR2018	SM	DM



SECTION A-A

3. THIS ACCESSORY PART IS PROVIDED WITHOUT TYPICAL TRANSPORTATION INDUSTRY PROCESS CONTROLS. NO VALIDATION TESTING HAS BEEN PERFORMED. CUSTOMER IS RESPONSIBLE FOR DETERMINING PRODUCT PERFORMANCE AND SUITABILITY FOR APPLICATION.

2. TEMPERATURE RATING: -29°C TO +100°C [-20°F TO +212°F]

1. THIS PART IS USED ON
 DRB12-48PXE-XXXX RECEPTACLE
 DRB16-48SXE-XXXX PLUG
 DRB12-60PXE-XXXX RECEPTACLE
 DRB16-60SXE-XXXX PLUG
 WHERE X=A,B,C,D KEYS AND XXXX=MODIFICATION

TE INTERNAL PN

DEUTSCH PN

DRB48-60-BT

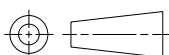
DRB48-60-BT

DIMENSIONS:

MM[INCH]

TOLERANCES UNLESS
OTHERWISE SPECIFIED:

0 PLC ±
 1 PLC ±
 2 PLC ±0.63[.025]
 3 PLC ±
 4 PLC ±
 ANGLES ±5°



DWN

D. MEYER

28JUN2014

CHK

P. CARNAHAN

28JUN2014

APVD

D. MEYER

28JUN2014

PRODUCT SPEC

APPLICATION SPEC

WEIGHT

49.00 G

MATERIAL

PVC

FINISH

BLACK

NAME

BOOT, SMALL
DRB SERIES

SIZE

CAGE CODE

DRAWING NO

RESTRICTED TO

A 4

4AFU8

C-DRB48-60-BT

CUSTOMER DRAWING

SCALE

NONE

SHEET

1 OF 1

REV

A1

2014

RELEASED FOR PUBLICATION

ALL RIGHTS RESERVED.

BY TE CONNECTIVITY

COPYRIGHT 2014

©